

Pointe du Bois Transmission Project
Project Study Area Municipalities

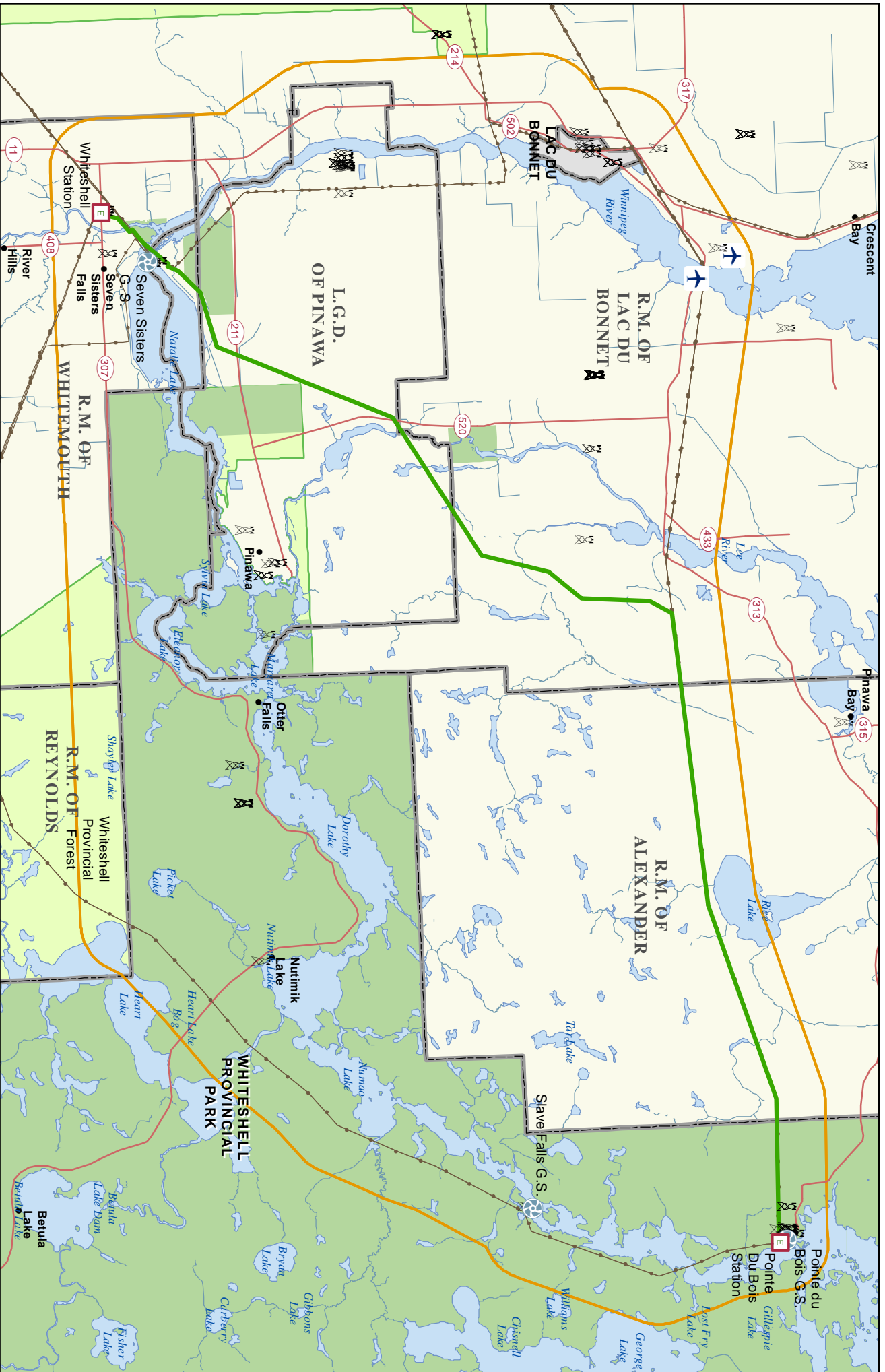
Map 5-7

Coordinate System: UTM Zone 14 NAD 83
 Data Source: MBHydro, MIM, ProvME, NRCan
 Date Created: December 12, 2013

0 1 2 3 4 Kilometres
 0 0.5 1 1.5 2 Mile

Manitoba Hydro

	Final Preferred Route		Community		Provincial Park
	Generating Station		Transmission Line		Provincial Forest
	Transmission Station		Provincial Road/Highway		Rural Municipality
	City / Town		City / Town		Project Study Area



Coordinate System: UTM Zone 14 NAD 83
 Date: 15/01/2010
 Date Created: December 18, 2010
 Date Modified: 18/12/2010
 Date Created: December 18, 2010

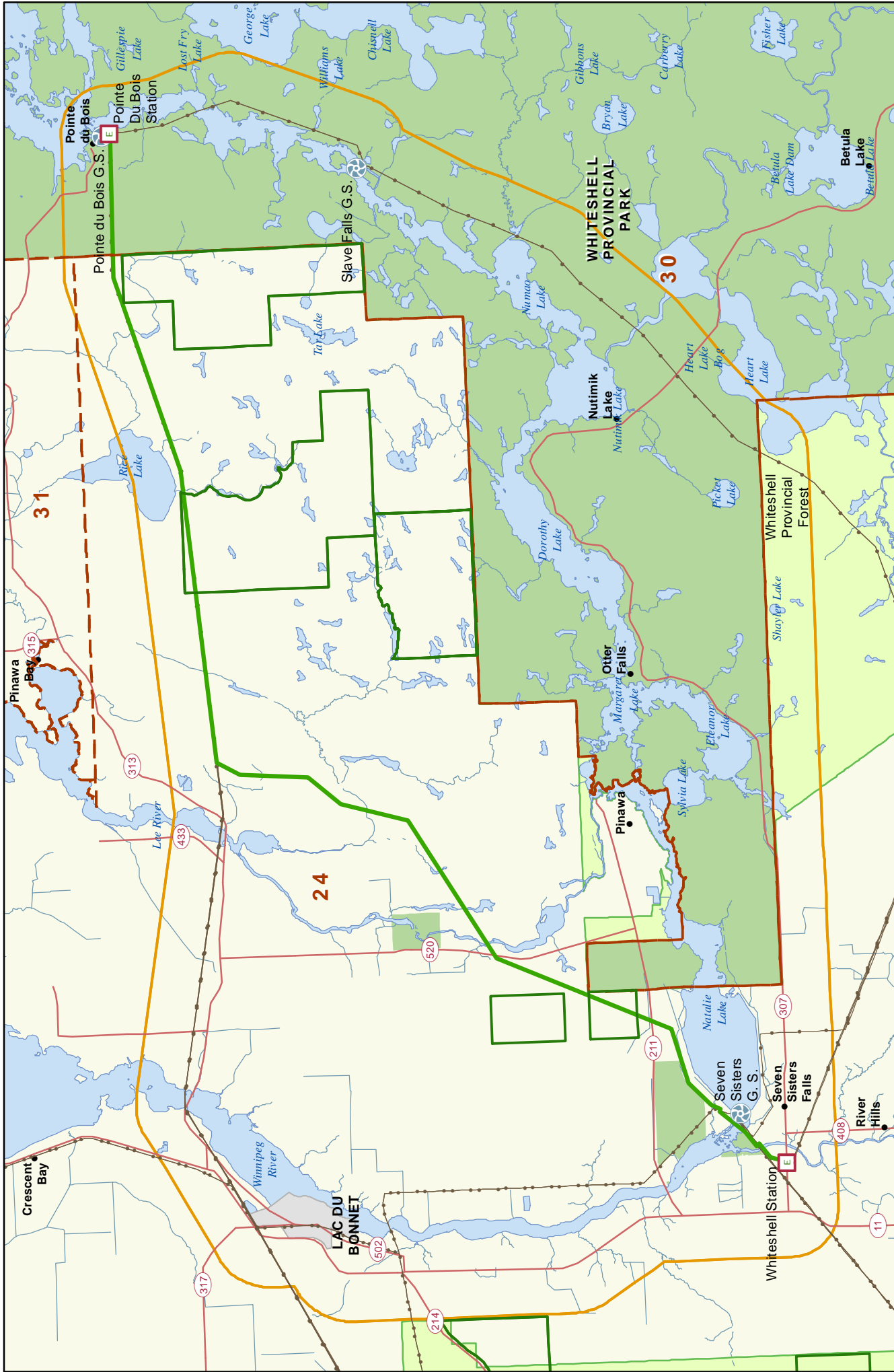
0 1 2 3 4 Kilometres
 0 0.5 1 1.5 2 Mile

- Final Preferred Route
- Communication Tower
- Transmission Station
- Community
- Provincial Park
- Aerodrome
- Transmission Line
- Provincial Road/Highway
- Provincial Forest
- Project Study Area
- City / Town
- Rural Municipality
- Generating Station

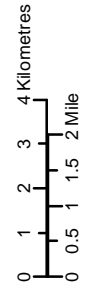
Pointe du Bois Transmission Project

Project Study Area Infrastructure





Coordinate System: UTM Zone 14 NAD 83
 Data Source: MBHydro, MIMI, ProvME, NRCan
 Date Created: January 24, 2014

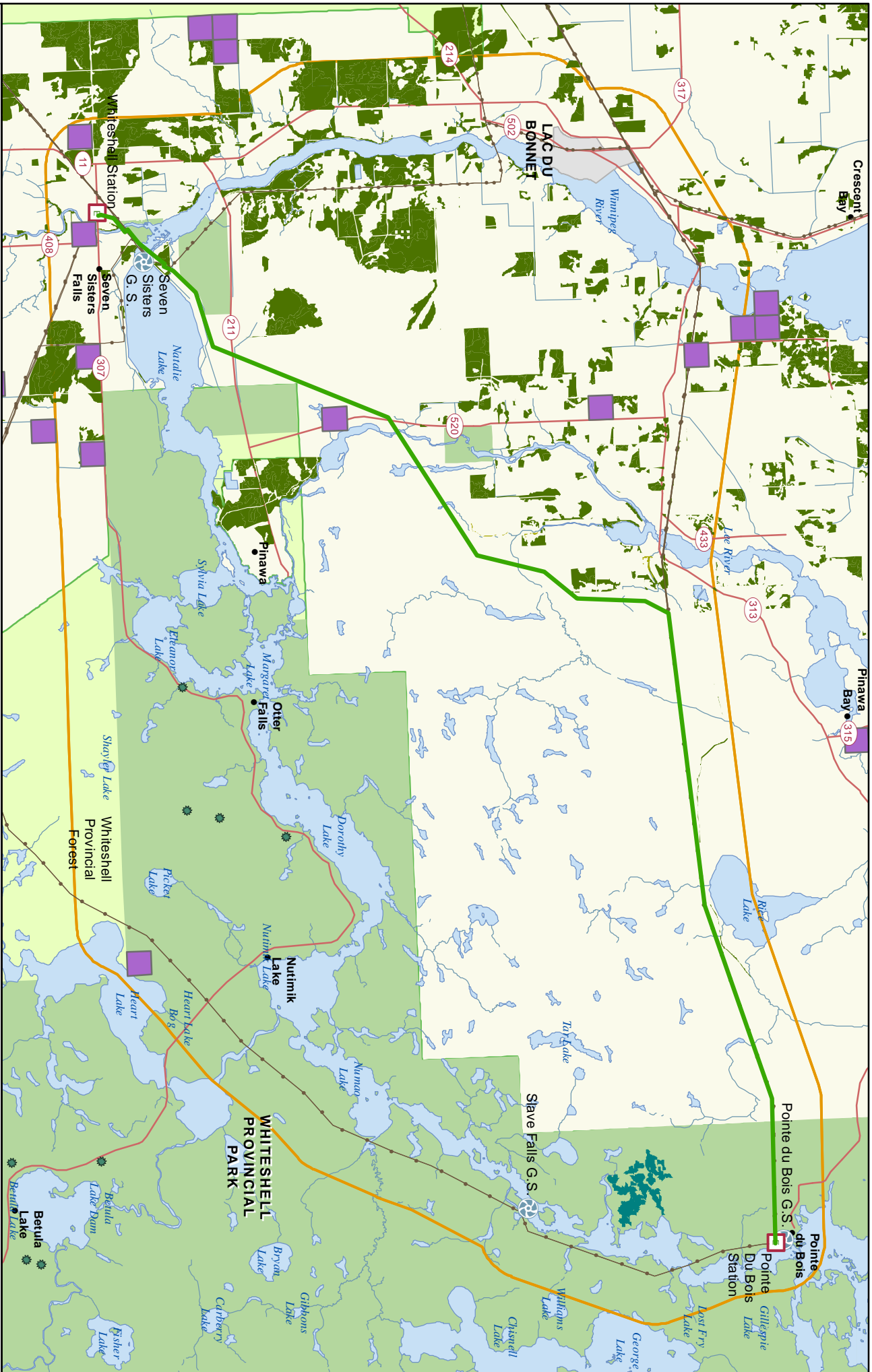


- Final Preferred Route
- Transmission Line
- Provincial Road/Highway
- Provincial Forest
- Generating Station
- City / Town
- Project Study Area
- Provincial Park
- Timber Sales Area
- FMU Boundary
- Transmission Station
- Community

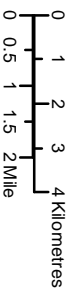
Pointe du Bois Transmission Project

FMU Boundaries/Timber Sales Areas



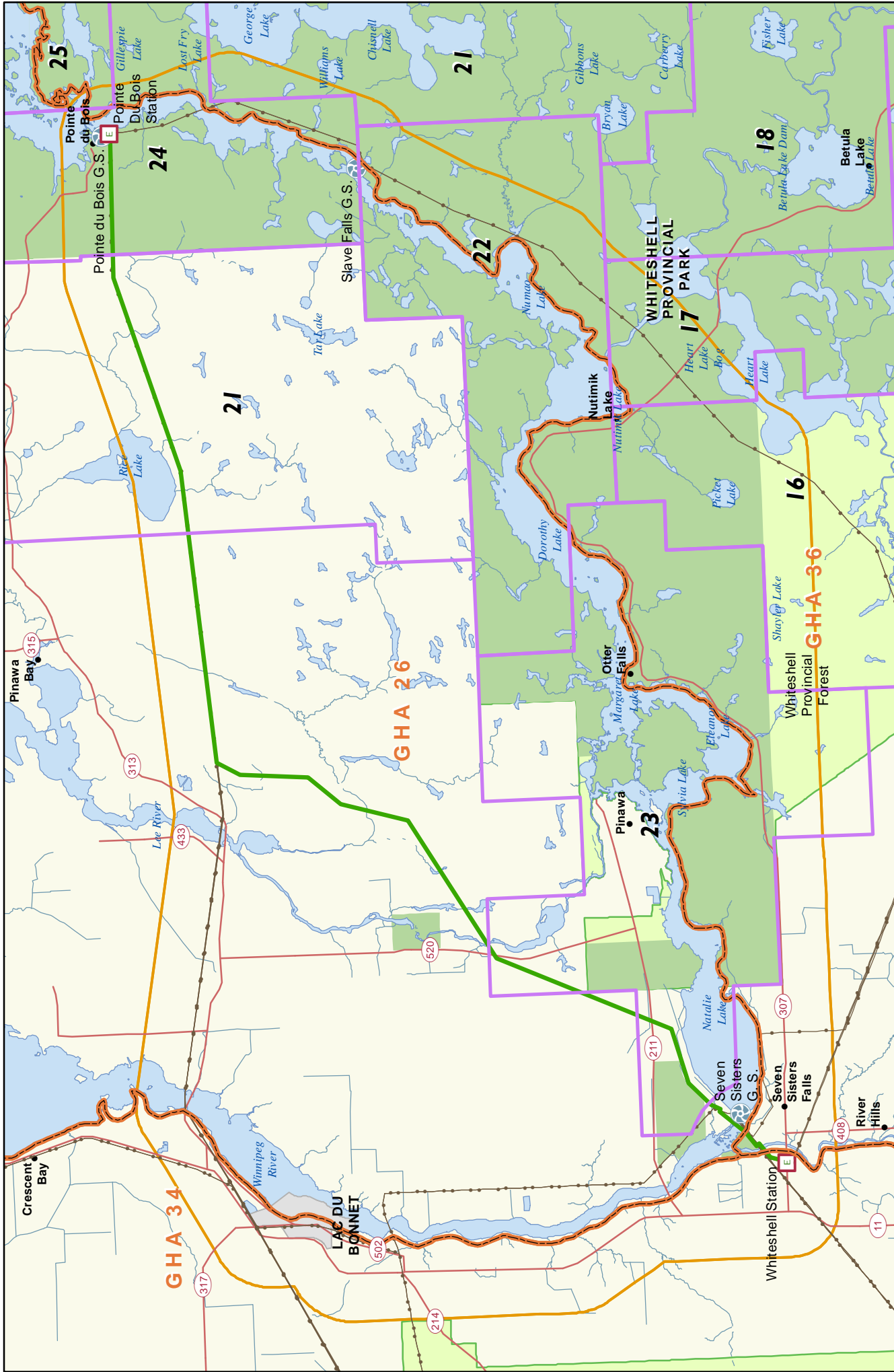


Coordinate System: UTM Zone 14 NAD 83
 Data Source: MBHydro, MIM, Masakwa, ProvMB, NRCan
 Date Created: December 18, 2013



- Final Preferred Route
- Provincial Road/Highway
- Generating Station
- Transmission Station
- City / Town
- Provincial Park
- Provincial Forest
- Project Study Area
- Permanent Sample Plot
- Woodlot
- Plantation
- Shelterbelt
- Private Productive Forest
- Community
- Transmission Line

Pointe du Bois Transmission Project
High Value Forest Areas



Manitoba Hydro

Coordinate System: UTM Zone 14 NAD 83
 Data Source: MBHydro, MMR, ProvME, NRCan
 Date Created: December 12, 2013

0 1 2 3 4 Kilometres
 0 0.5 1 1.5 2 Miles

Final Preferred Route
 Generating Station
 Transmission Station
 Community

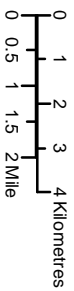
Provincial Forest
 Provincial Road/Highway
 City / Town
 Provincial Park

Project Study Area
 Registered Trapline
 Game Hunting Area

Pointe du Bois Transmission Project
Registered Traplines and
Game Hunting Areas

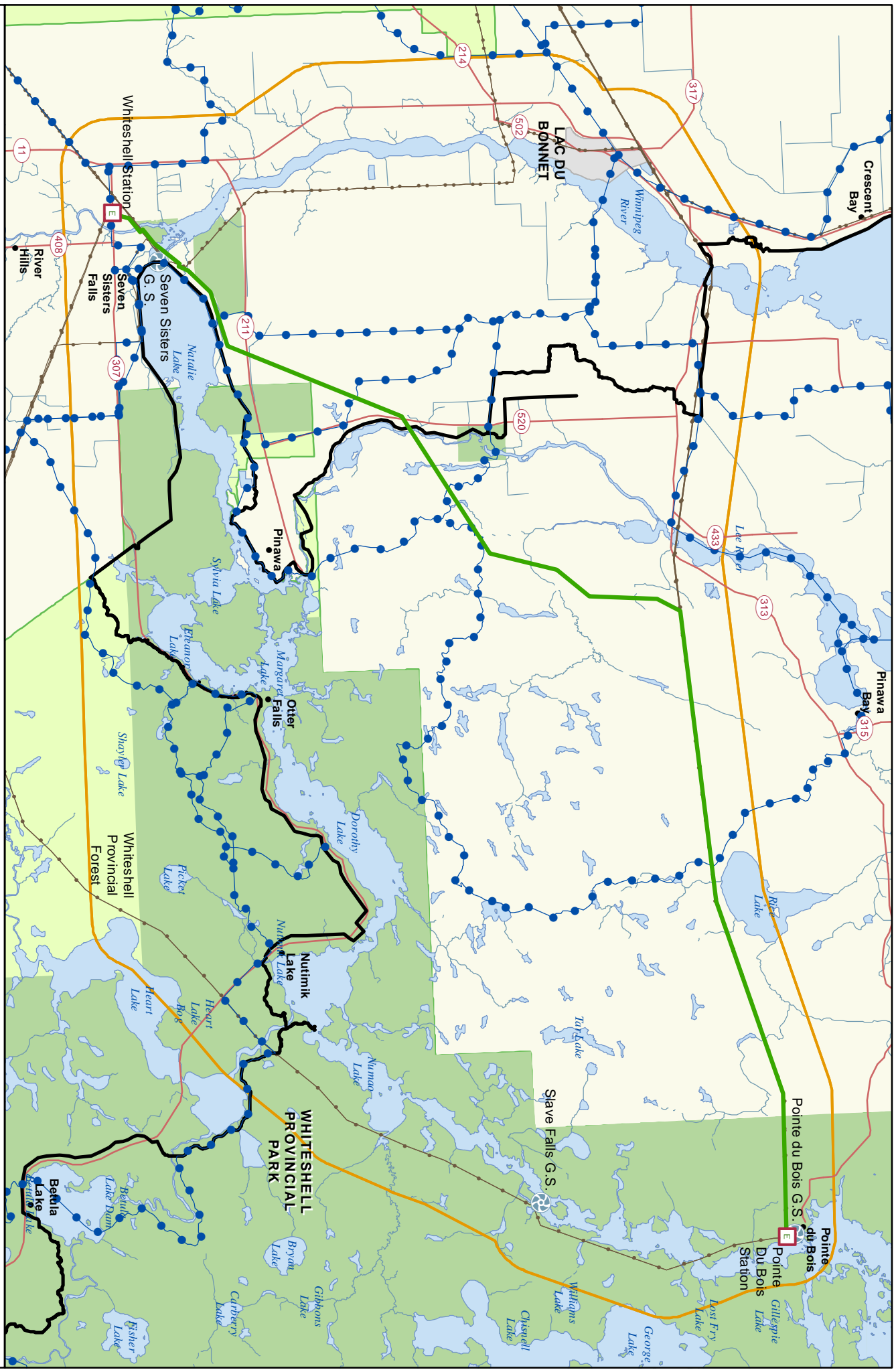
Map 5-11

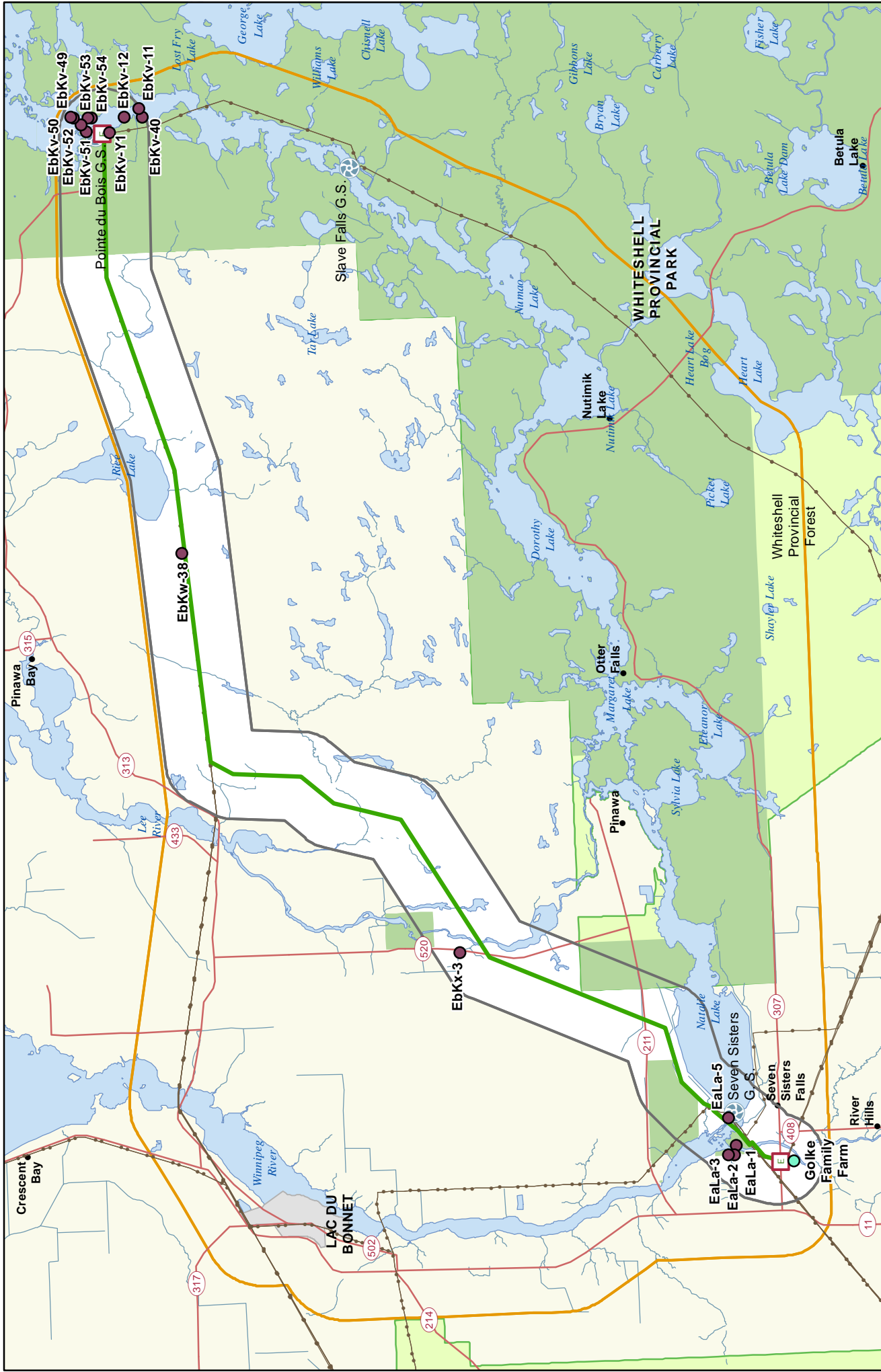
Coordinate System: UTM Zone 14 NAD 83
 Data Source: MBHydro, MMM, PovMB, NRCAN, WMS
 Date Created: January 24, 2014



- Final Preferred Route
- Generating Station
- Transmission Station
- Community
- TransCanada Trail
- Snowmobile Trail
- Transmission Line
- Provincial Road/Highway
- City / Town
- Provincial Park
- Provincial Forest
- Project Study Area

Pointe du Bois Transmission Project Recreational Trails





Pointe du Bois Transmission Project
Heritage Resources

Coordinate System: UTM Zone 14 NA D 83
Data Source: MBHydro, MIMI, ProvMB, NRCan, NLHS
Date Created: December 12, 2013

0 1 2 3 4 Kilometres
0 0.5 1 1.5 2 Miles

Final Preferred Route
 Provincial Park
 Provincial Forest
 Project Study Area
 Final Preferred Route Corridor
 Transmission Station
 Community
 Transmission Line
 Provincial Road/Highway
 City / Town
 Archaeological Site
 Centennial Farm
 Generating Station

Final Preferred Route
 Provincial Park
 Provincial Forest
 Project Study Area
 Final Preferred Route Corridor
 Transmission Station
 Community
 Transmission Line
 Provincial Road/Highway
 City / Town
 Archaeological Site
 Centennial Farm
 Generating Station

Final Preferred Route
 Provincial Park
 Provincial Forest
 Project Study Area
 Final Preferred Route Corridor
 Transmission Station
 Community
 Transmission Line
 Provincial Road/Highway
 City / Town
 Archaeological Site
 Centennial Farm
 Generating Station

