

Pointe du Bois Transmission Project
Project Study Area

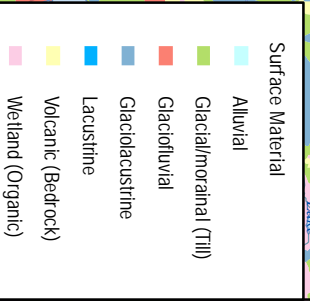
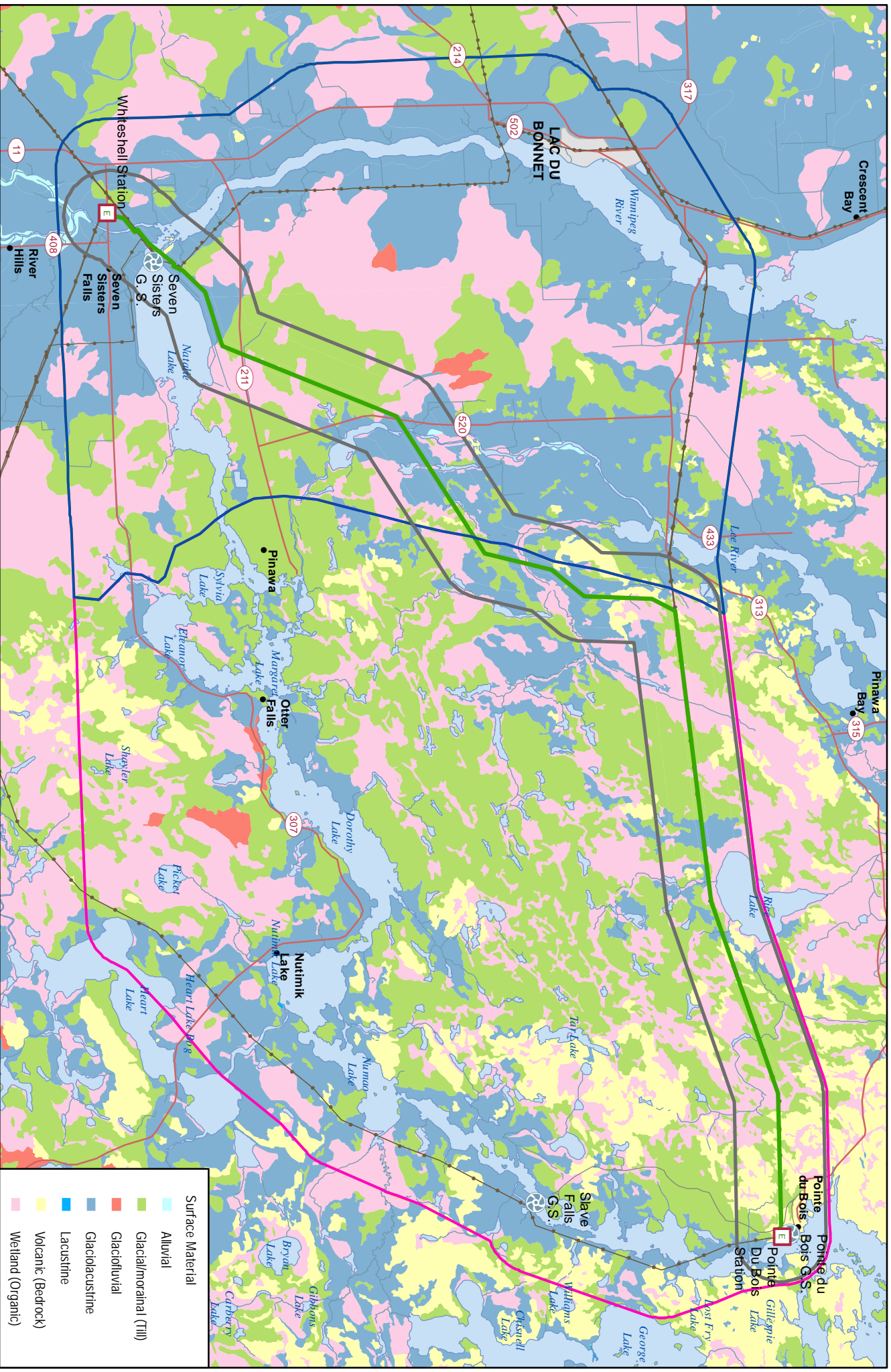
Map 5-1

Coordinate System: UTM Zone 14 NAD 83
 Data Source: MBHydro, MMR, ProvME, NRCan
 Date Created: December 12, 2013

0 1 2 3 4 Kilometres
 0 0.5 1 1.5 2 Miles

Generating Station
 Transmission Station
 Community
 Transmission Line
 Provincial Road/Highway
 City/Town
 Provincial Park
 Provincial Forest
 Rural Municipality
 Project Study Area

Manitoba Hydro



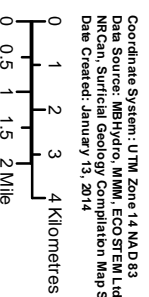
Coordinate System: UTM Zone 14 NAD 83
 Data Source: MBHydro, MIM, ECOSYSTEM Ltd, ProVIB, NRCAN, Surficial Geology Compilation Map Series
 Date Created: January 13, 2014

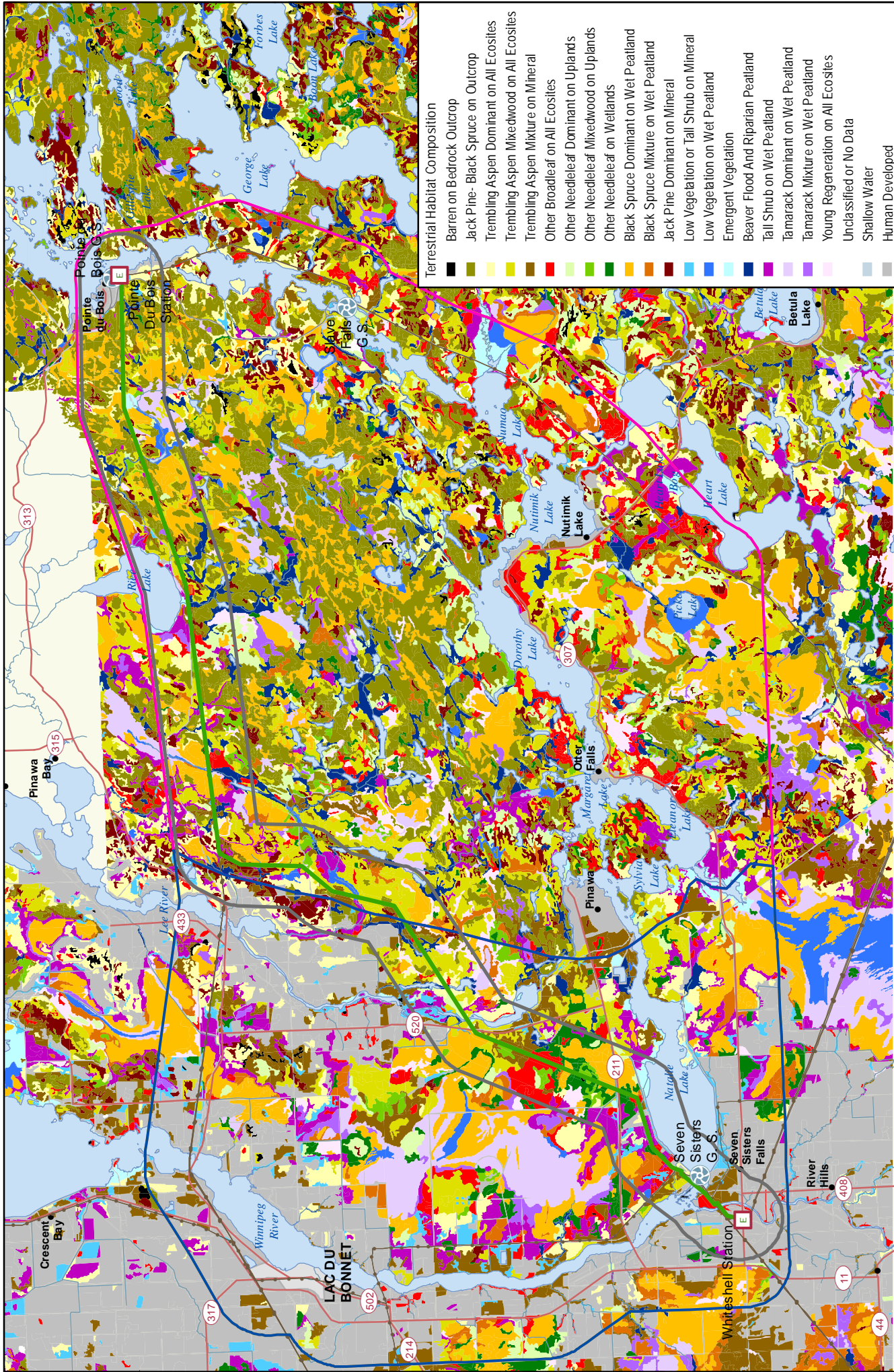


- Final Preferred Route
- Transmission Line
- E Generating Station
- E Transmission Station
- E Community
- Provincial Road/Highway
- City / Town
- Inhabited Local
- Study Area
- Subdivisions East
- Subdivisions West

Pointe du Bois Transmission Project

Surface Materials





- Terrestril Habitat Composition**
- Barren on Bedrock Outcrop
 - Jack Pine- Black Spruce on Outcrop
 - Trembling Aspen Dominant on All Ecosites
 - Trembling Aspen Mixedwood on All Ecosites
 - Trembling Aspen Mixture on Mineral
 - Other Broadleaf on All Ecosites
 - Other Needleleaf Dominant on Uplands
 - Other Needleleaf Mixedwood on Uplands
 - Other Needleleaf on Wellands
 - Black Spruce Dominant on Wet Peatland
 - Black Spruce Mixture on Wet Peatland
 - Jack Pine Dominant on Mineral
 - Low Vegetation or Tall Shrub on Mineral
 - Low Vegetation on Wet Peatland
 - Emergent Vegetation
 - Beaver Flood And Riparian Peatland
 - Tall Shrub on Wet Peatland
 - Tamarack Dominant on Wet Peatland
 - Tamarack Mixture on Wet Peatland
 - Young Regeneration on All Ecosites
 - Unclassified or No Data
 - Shallow Water
 - Human Developed

Coordinate System: UTM Zone 14 NA D 83
 Data Source: MBHydro, MIMI, ECO STEW L.Ltd., ProVMB, NRCAN, Surfacial Geology Compilation Map Series
 Date Created: January 13, 2014

0 1 2 3 4 Kilometres
 0 0.5 1 1.5 2 Mile

Manitoba Hydro

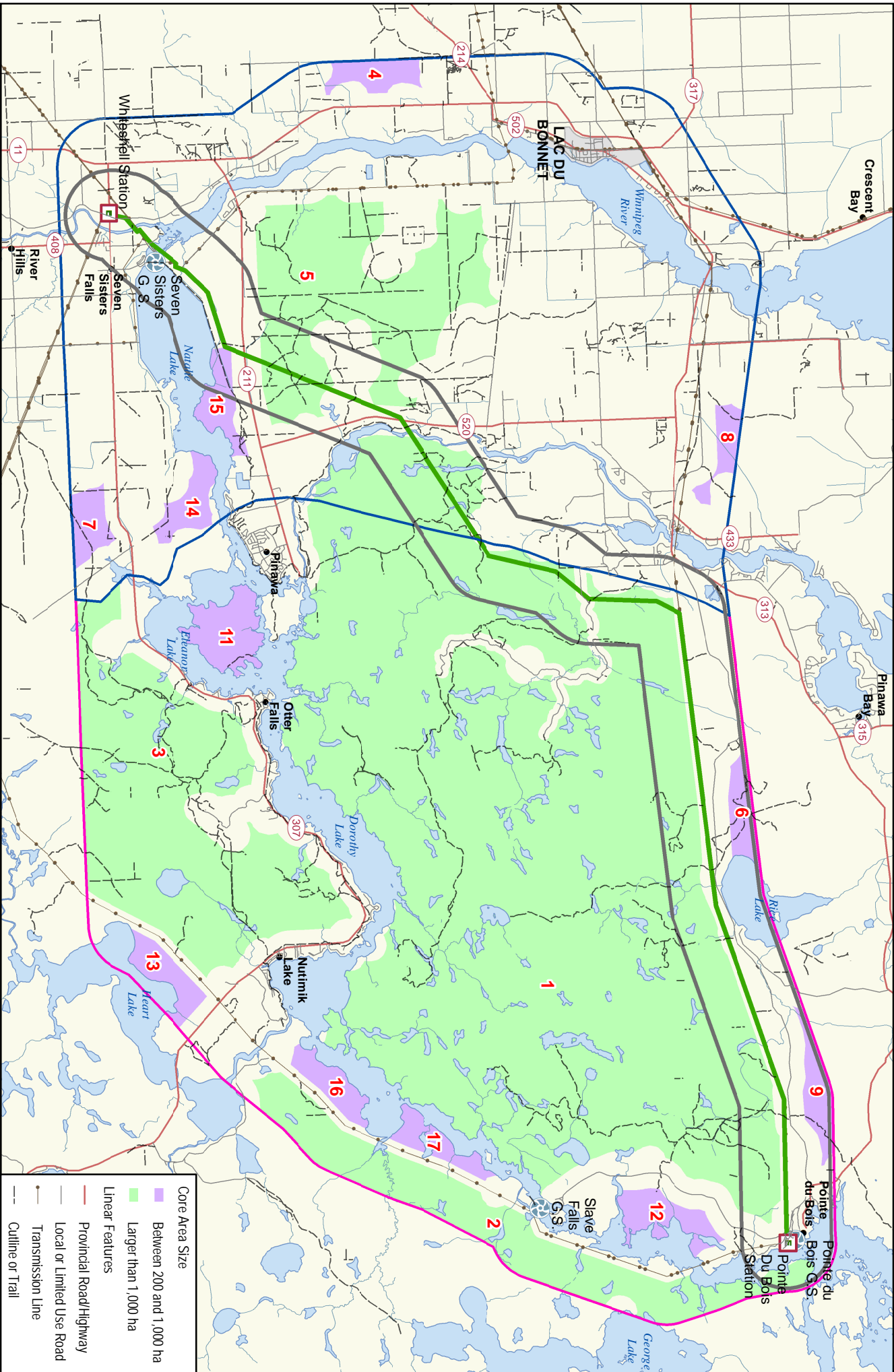
Pointe du Bois Transmission Project
Terrestril Habitat Composition

Project Area Subdivisions: East West

Final Preferred Route: Generating Station, Transmission Station, Community

Transmission Line: Provincial Road/Highway, City / Town, Inaccess Local Study Area

Map 5-3



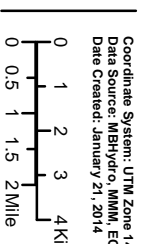
Core Area Size	
	Between 200 and 1,000 ha
	Larger than 1,000 ha

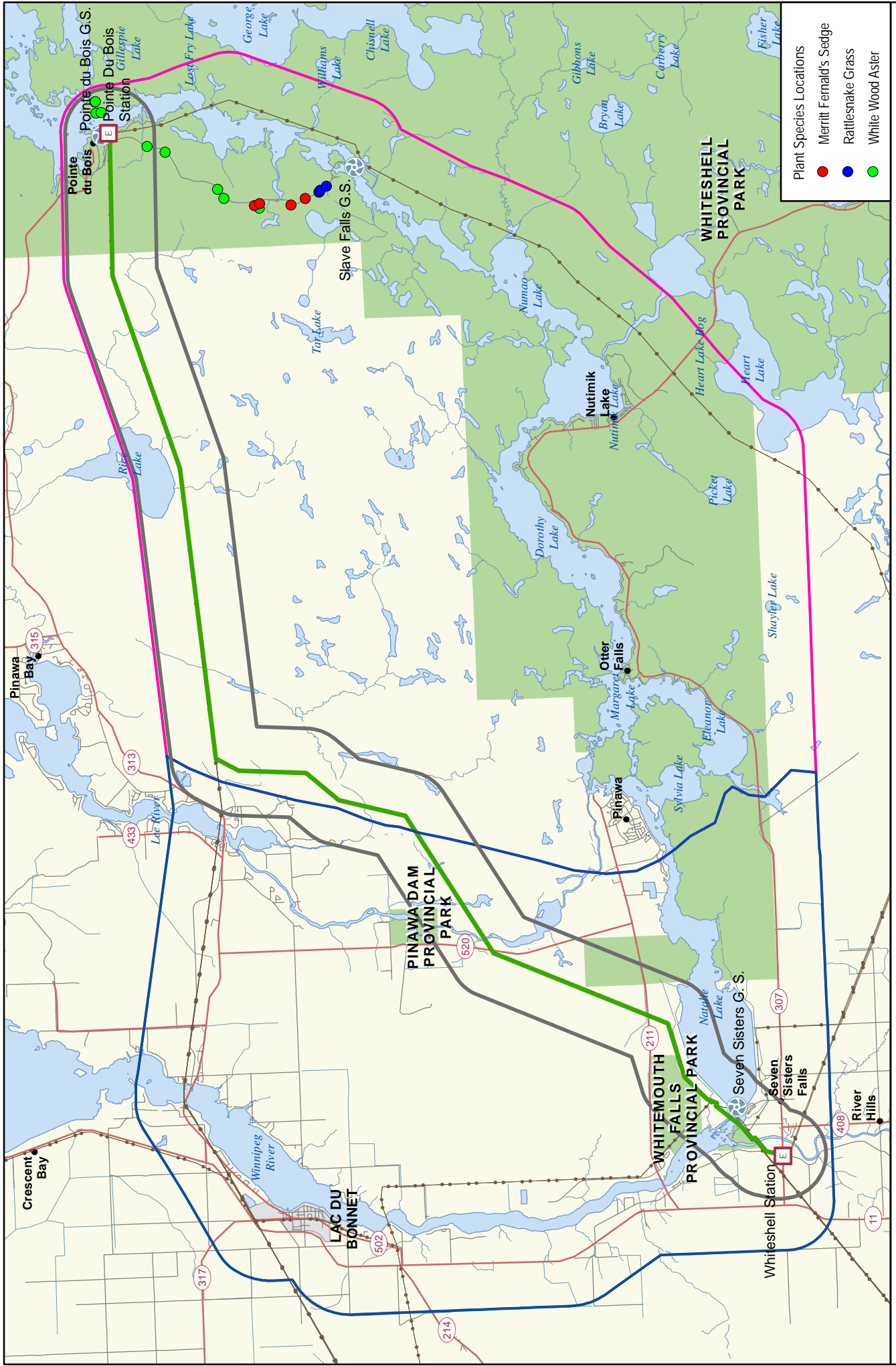
Linear Features	
	Provincial Road/Highway
	Local or Limited Use Road
	Transmission Line
	Quilne or Trail

Coordinate System: UTM Zone 14 NAD 83
 Data Source: MBHydro, MIM, ECOSTEM Ltd, ProvMB, NRCan
 Date Created: January 21, 2014

- Final Preferred Route
- Generating Station
- E Transmission Station
- Community
- City / Town
- Inaccess Local
- Study Area
- Project Area Subdivisions
- East
- West

Pointe du Bois Transmission Project
Linear Features and Core Area
 Map 5-4





Plant Species Locations

- Merritt Fernald's Sedge
- Rattlesnake Grass
- White Wood Aster

Pointe du Bois Transmission Project
Provincially Very Rare Plant Locations

Map 5-5

Coordinate System: UTM Zone 14 NAD 83
 Data Source: MBHydro, MMM, ECOSTEM Ltd, ProvMB, NRCan
 Date Created: January 13, 2014

0 1 2 3 4 Kilometres
 0 0.5 1 1.5 2 Mile

Legend:

- Final Preferred Route
- Generating Station
- Transmission Station
- Community
- E Provincial Park
- E Project Area Subdivisions
- E City / Town
- E Intactness Local
- E Study Area
- E Provincial Park
- E Project Area Subdivisions
- E East
- E West



Coordinate System: UTM Zone 14 NAD 83
 Data Source: MBHydro, MMW, ProvMB, NRCAN
 Date Created: December 18, 2013



- Final Preferred Route
- Generating Station
- Transmission Station
- Community

- Transmission Line
- Provincial Road/Highway
- Area of Special Interest (A.S.I.)
- Wildlife Management Area

- City / Town
- Provincial Park
- Provincial Forest
- Rural Municipality
- Project Study Area

Pointe du Bois Transmission Project

Protected Areas Initiative Lands

