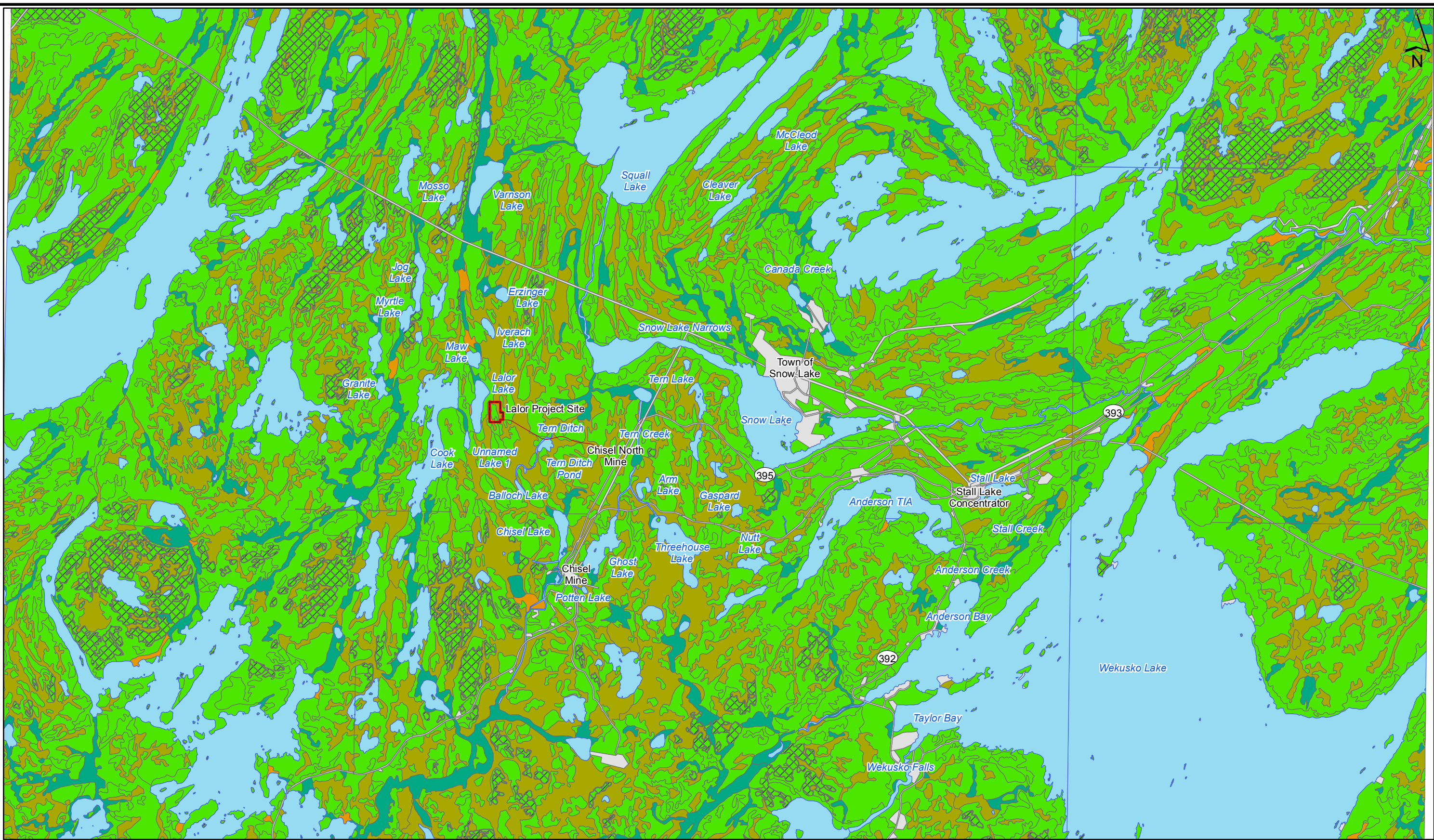


A SIZE 8.5" x 11" (215.9mm x 279.4mm)
 PLOT: 12/02/08 12:07:07 PM
 SAVED BY: cloustonec
 AECOM FILE NAME: GIS-2012-01-24_Terrain Analysis-60157028
 This drawing has been prepared for the use of AECOM's client and may not be used, reproduced or relied upon by third parties, except as agreed by AECOM and its client, as required by law or for use by governmental reviewing agencies. AECOM accepts no responsibility, and denies any liability whatsoever, to any party that modifies this drawing, without AECOM's express written consent. All measurements must be obtained from stated dimensions.



1,000 0 1,000 2,000
 m
1:100,000
 Projection: UTM Zone 14U
 Datum: CSRS NAD83

- | | | | |
|-----------------|----------------|---------------------|--------------|
| Lolor Footprint | Till over Rock | Organics over Till | Unclassified |
| Till | Organics | Organics over Water | Water |

Hudson Bay Mining and Smelting Co., Limited
Proposed Lolor Mine Environmental Baseline Assessment

Terrain Analysis

