

DATA SOURCE:
Manitoba Hydro, KGS Acres

DATE CREATED:
13 MAY 2011

CREATED BY:
KGSA

REVISION No.
VERSION 1.0

REVISION DATE:
17 MAY 2011

QA/QC:
RHP, MWZ,
BMP

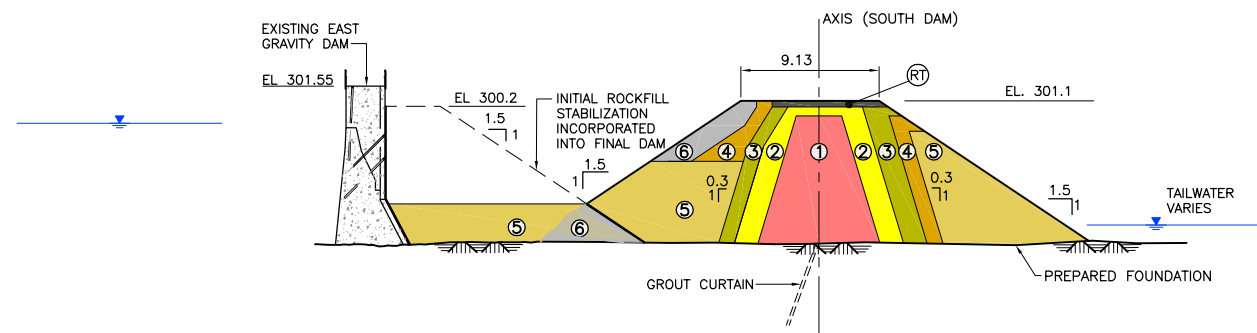
Legend

- © ROCKFILL
- WATER LEVEL
- BEDROCK SURFACE

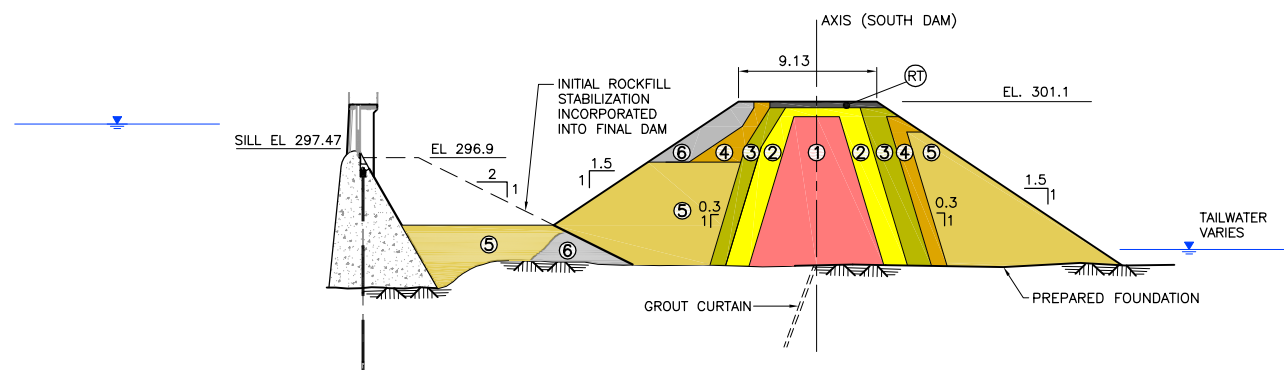
Pointe du Bois Spillway Replacement Project

Blast Mattress

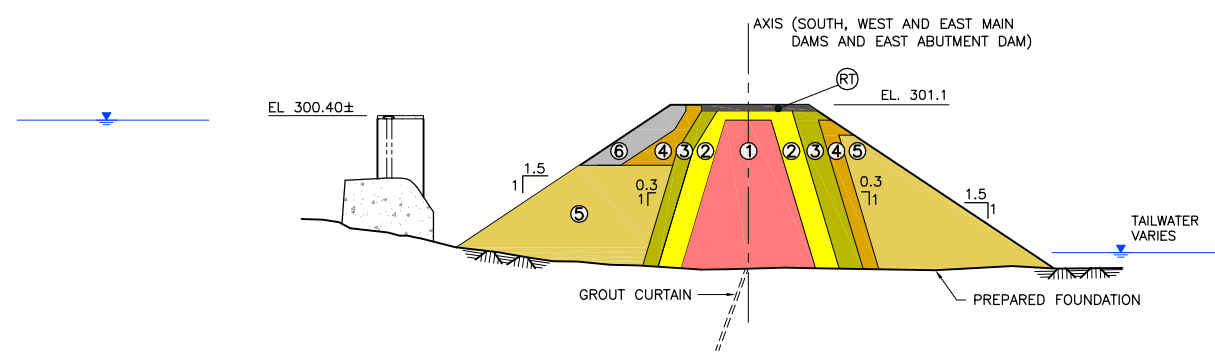
Figure:
3.23



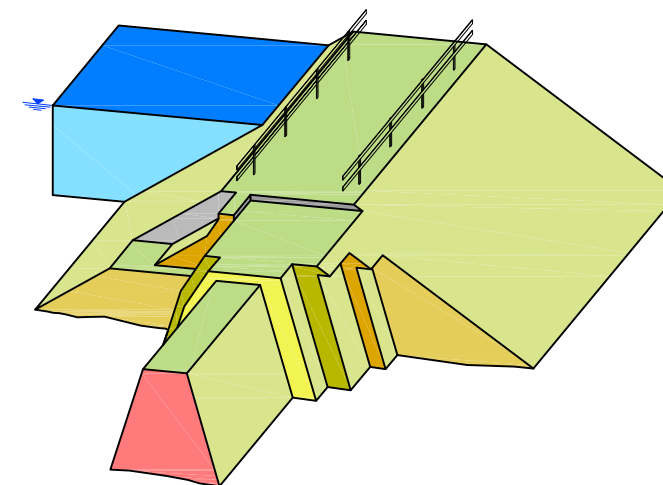
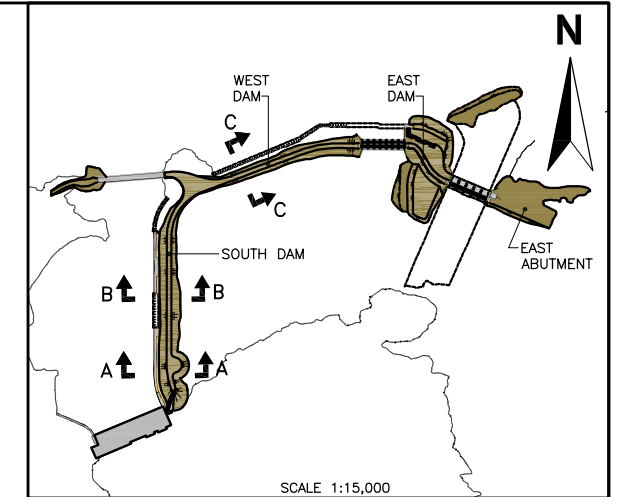
A-A SOUTH DAM AT THE EAST GRAVITY DAM



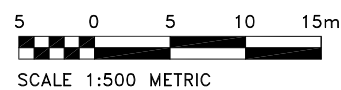
B-B SOUTH DAM AT THE EAST GRAVITY DAM SPILLWAY



**C-C TYPICAL SECTION OF MAIN DAM
(SOUTH, WEST, EAST AND EAST ABUTMENT)**



**MAIN DAM (ISOMETRIC)
(SOUTH, WEST, EAST AND EAST ABUTMENT)**



DATA SOURCE:
Manitoba Hydro, KGS Acres

DATE CREATED:
13 MAY 2011

CREATED BY:
KGSA

REVISION No.
VERSION 1.0

REVISION DATE:
17 MAY 2011

QA/QC:
RHP, MWZ,
BMP

Legend

DAM FILL

- (RT) ROAD TOPPING
- (1) IMPERVIOUS FILL
- (2) FINE GRANULAR

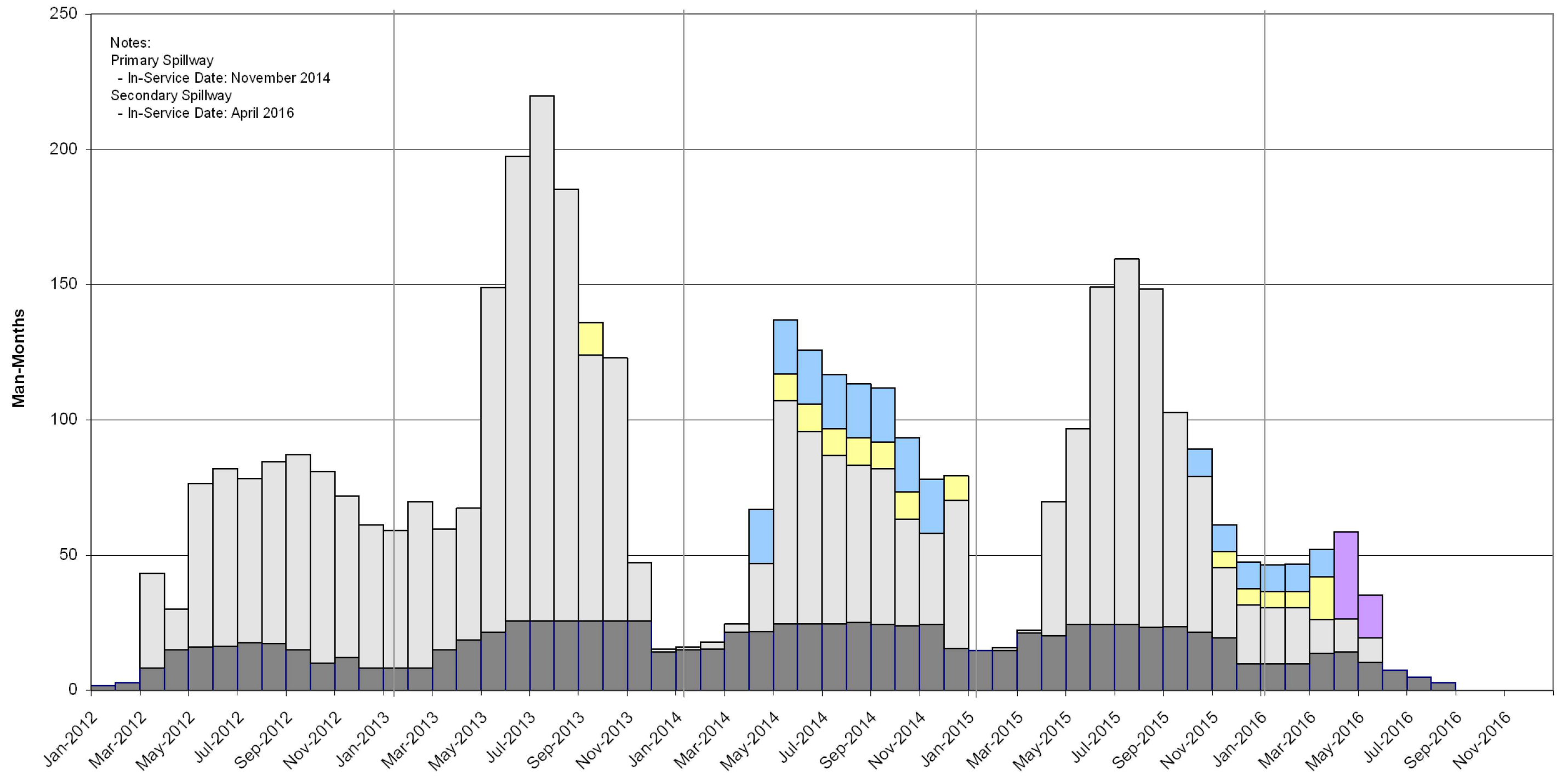
- (3) COARSE GRANULAR
- (4) RIPRAP BEDDING
- (5) ROCKFILL
- (6) RIPRAP

- WATER LEVEL
- BEDROCK SURFACE

**Pointe du Bois
Spillway Replacement Project**

Earthfill Dams - Sections

Figure:
3.24



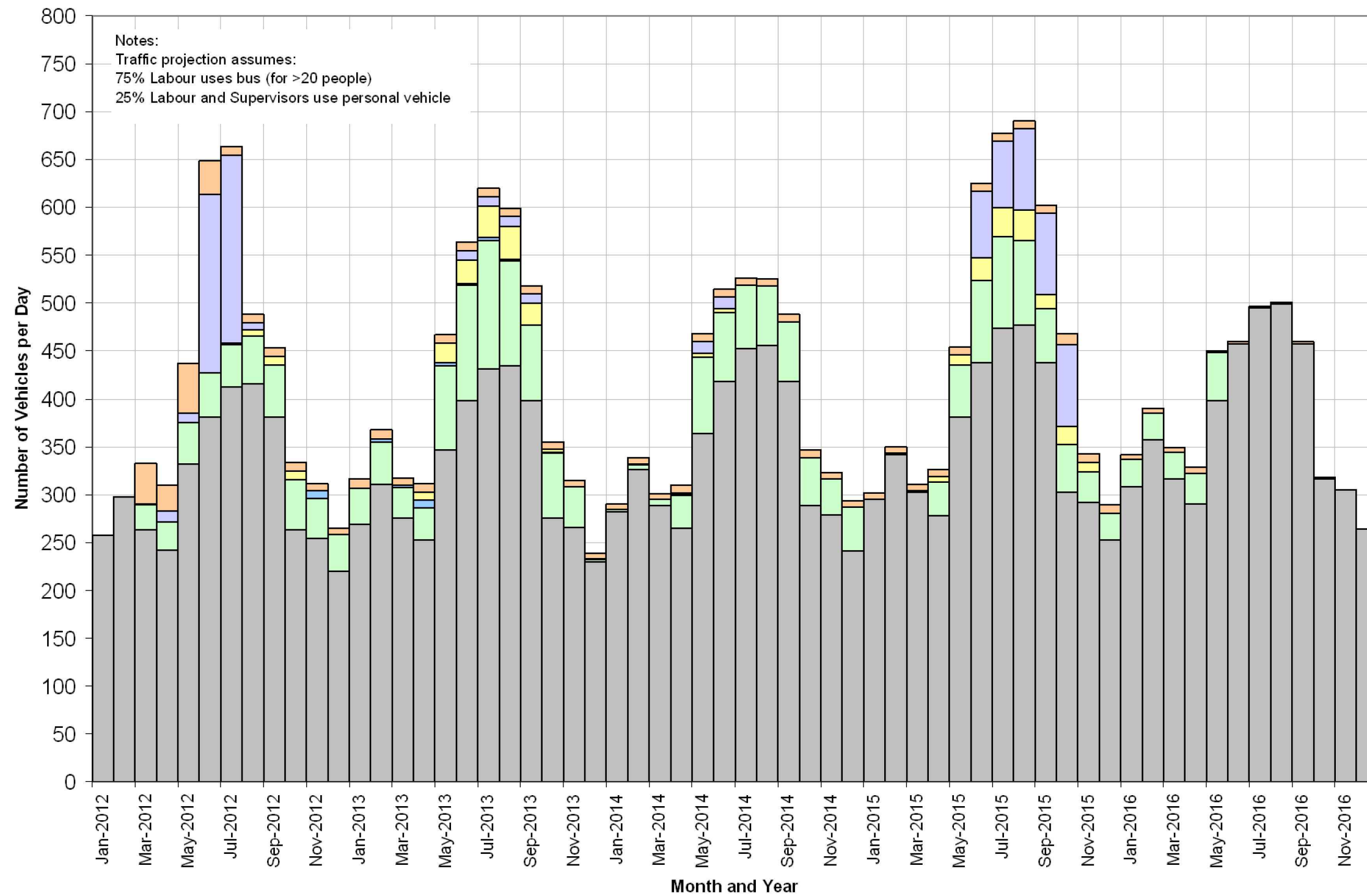
DATA SOURCE: Manitoba Hydro, KGS Acres		
DATE CREATED: 13 MAY 2011	CREATED BY: KGS	
REVISION No. VERSION 1.0	REVISION DATE: 17 MAY 2011	QA/QC: RHP, MWZ, BMP

Legend	
■ MH Internal WorkForce	□ General Civil Contractor
■ Decommissioning	■ Mechanical and Electrical
■ Gate and Guides	

**Pointe du Bois
Spillway Replacement Project**

Workforce Estimates

Figure:
3.25



DATA SOURCE:
Manitoba Hydro, KGS Acres

DATE CREATED:
13 MAY 2011

CREATED BY:
KGS

REVISION No.
VERSION 1.0

REVISION DATE:
17 MAY 2011

QA/QC:
RHP, MWZ, BMP

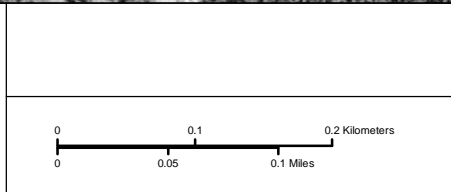
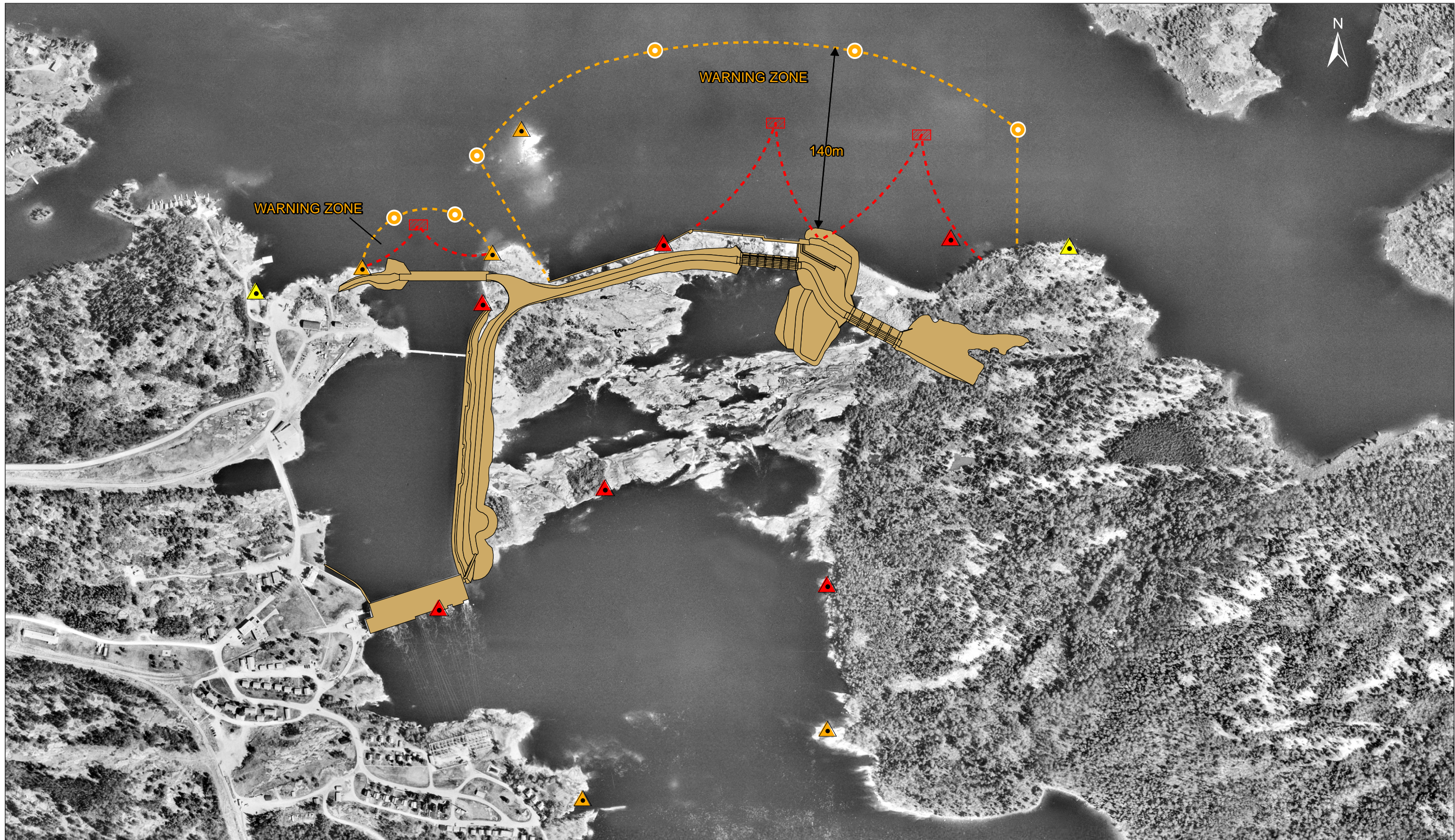
Legend

- Existing Public Traffic
- Personnel Transportation
- Electrical and Mechanical
- Concrete and Structural
- Earthwork
- Mobilization & Demobilization

**Pointe du Bois
Spillway Replacement Project**

**Traffic Volume Projections
for PR313**

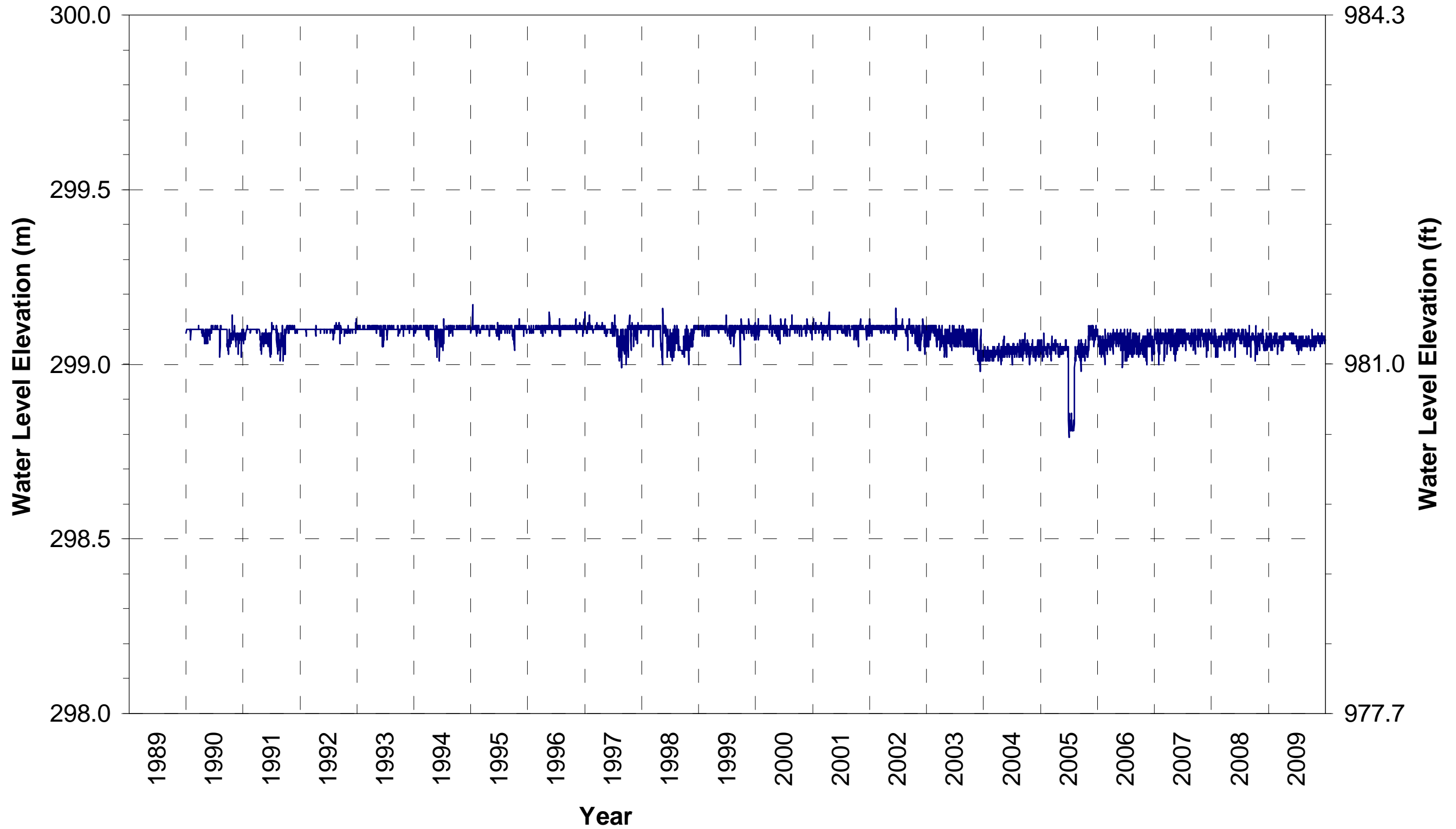
Figure:
3.26



DATA SOURCE: Manitoba Hydro, KGS Acres		
DATE CREATED: 16 MAY 2011	CREATED BY: HPP - Pointe du Bois Planning	
REVISION NO: VERSION 1.0	REVISION DATE: 31 MAY 2011	QA/QC: RHP, MWZ, BMP

Legend			
	Warning Signs		Extreme Danger Signs
	Danger Signs		Buoys
	Warning Zone Limits		Booms
	Boom Anchor Points		

Pointe du Bois Spillway Replacement Project	
Preliminary Navigable Waters Public Safety Measures	
Figure:	3.27



Period of Record: January 1990 to December 2009



Datum: Canadian Geodetic Vertical Datum (CGVD) 1929

DATA SOURCE: Manitoba Hydro		
DATE CREATED: 31 JAN 2011	CREATED BY: Water Resources Engineering	
REVISION NO: VERSION 1.0	REVISION DATE: 31 MAY 2011	QA/QC: KMS / MWZ

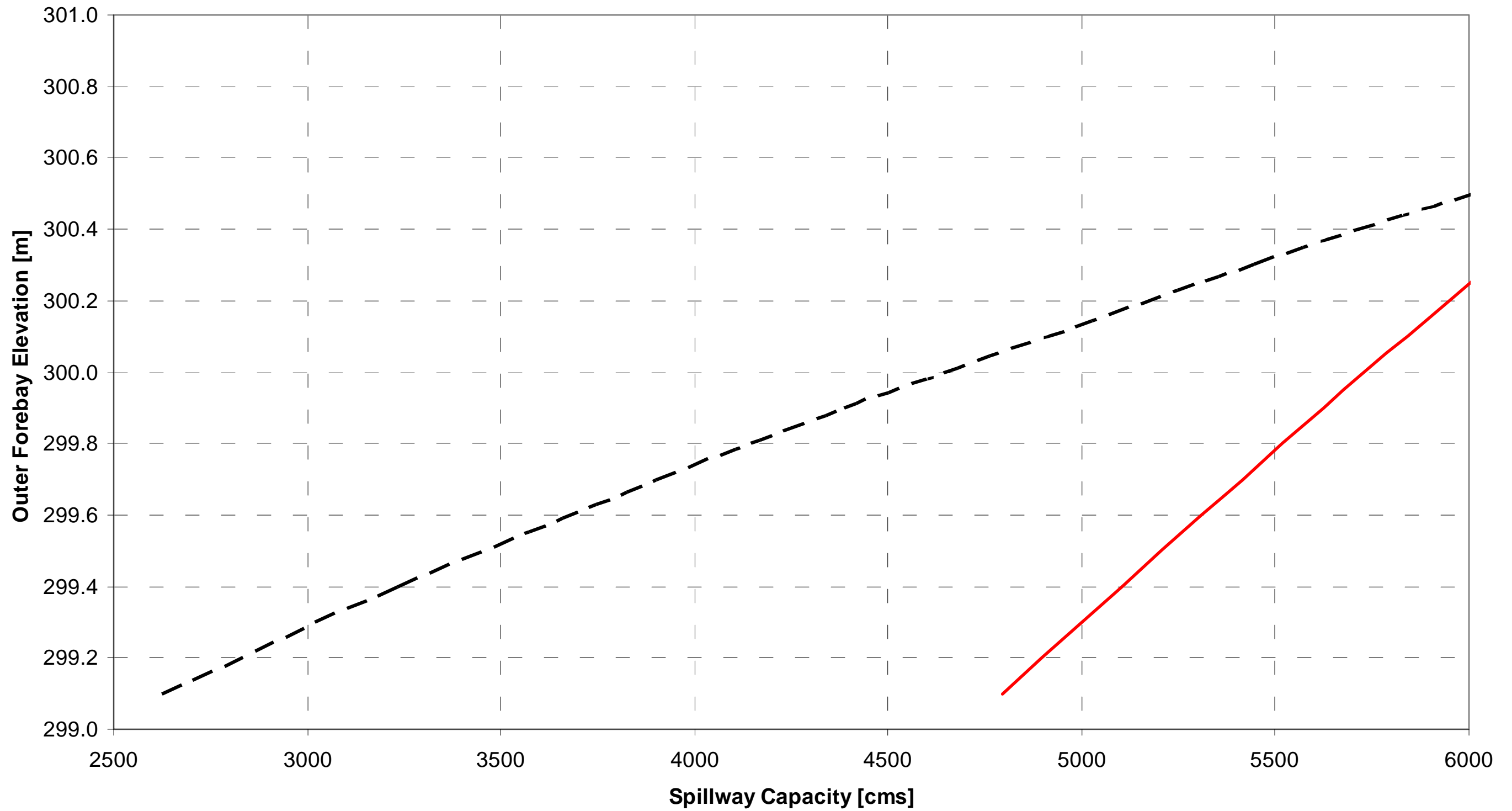
Legend

— Water Level [m]

**Pointe du Bois
Spillway Replacement Project**

Historical Operating Range of Outer Forebay

Figure:
3.28



File Location: I:\2010\2 - Pointe du Bois\Work\400\400\2010\2011\Fig_3.29_SE_PP_Rating_Curves.mxd



DATA SOURCE: Manitoba Hydro / KGS Acres		
DATE CREATED: 27 MAY 2011	CREATED BY: Water Resources Engineering	
REVISION NO: VERSION 1.0	REVISION DATE: 27 MAY 2011	QA/QC: KMS / MWZ

Legend

- Proposed Spillway (Post-Project) Rating Curve
- - - Existing Spillway Rating Curve

**Pointe du Bois
Spillway Replacement Project**

**Existing Environment and Post Project
Spillway Discharge Rating Curves**

Figure:
3.29