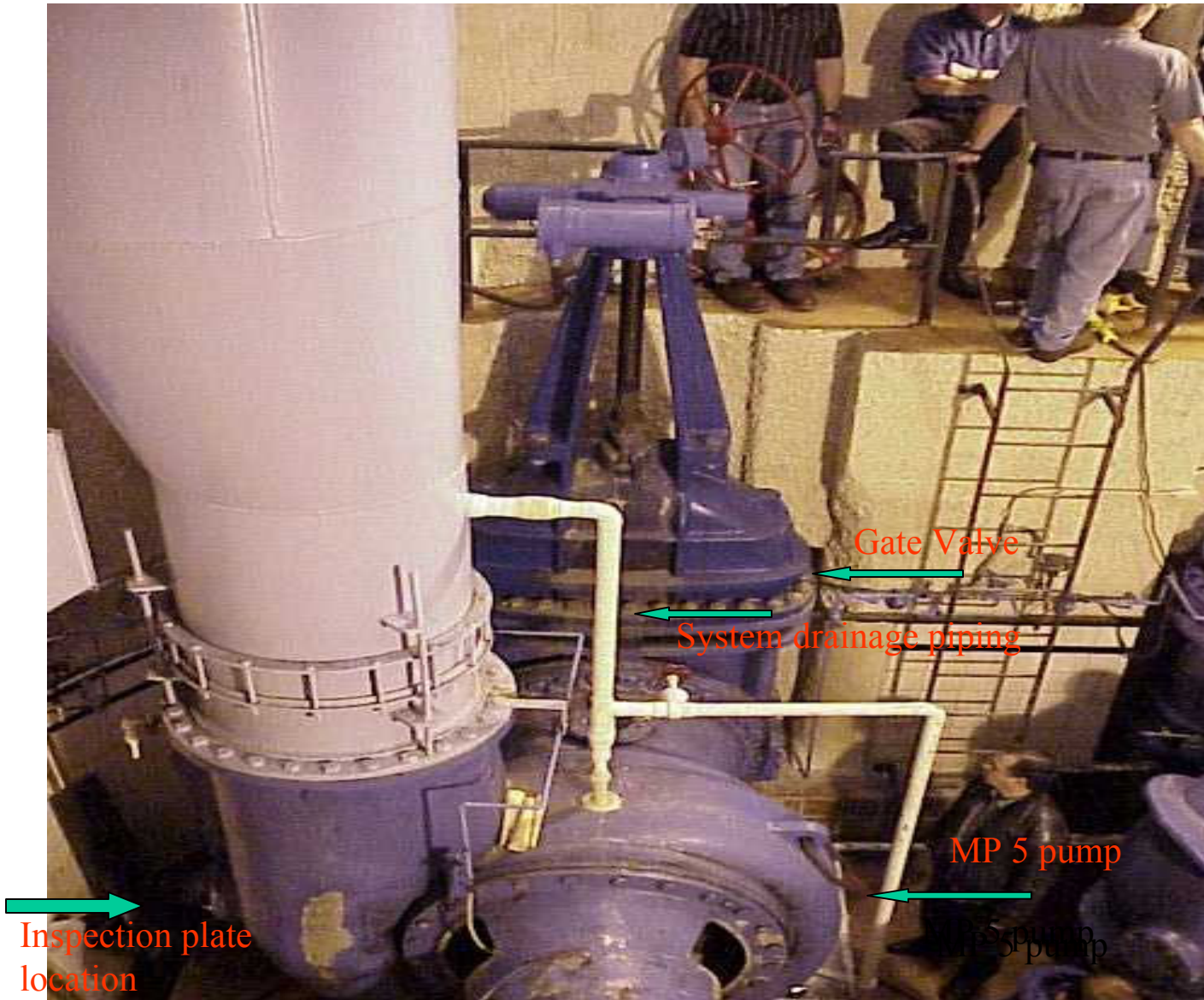


PHOTO LIBRARY

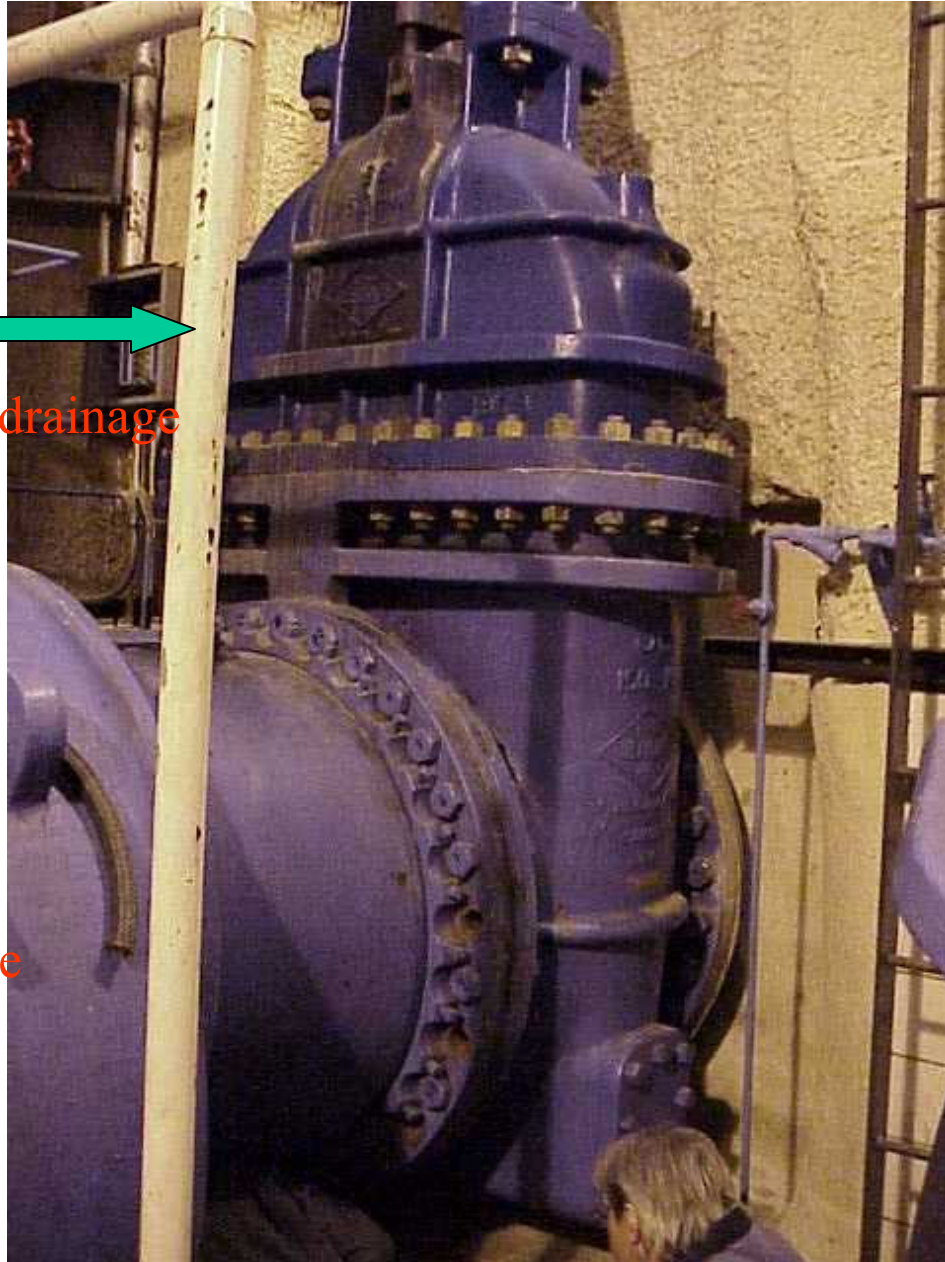
- Dry Wells







Inspection plate on side of pump MP5



System drainage
pipe

Suction intake valve
and reducer



Rotork valve actuator



Removal of the valve bonnet - photo shows location of valve plate and attached valve stem.



Top view of valve plate and valve stem. Valve had been blocked by a diver to prevent the altering of the location of the valve plate during the dismantling of the valve. The valve could not be removed without partial disassembly



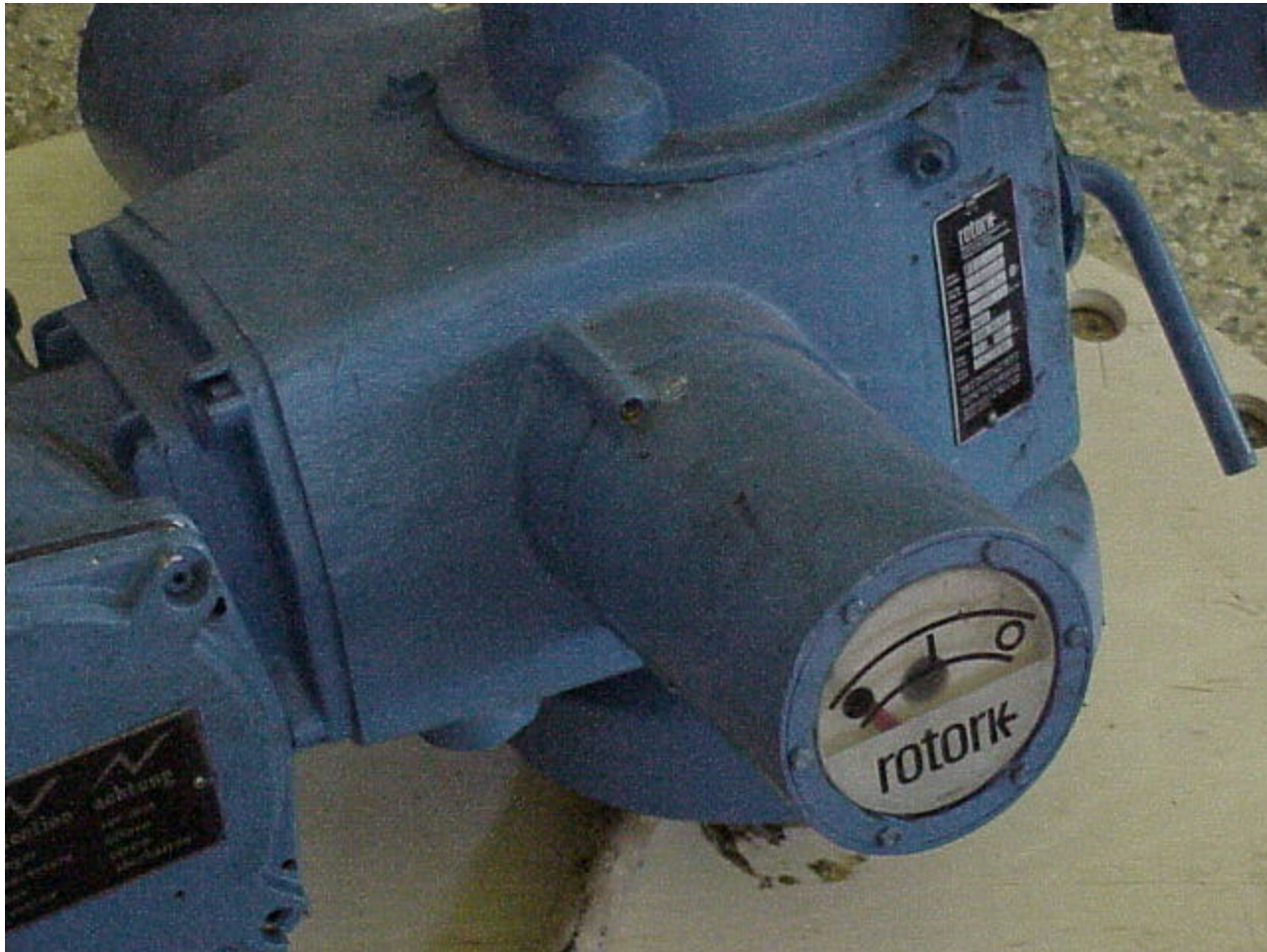
Viewing into the lower portion of the suction gate valve.



Photo shows valve guide in place on the lower portion of the valve body



Photo shows valve guide missing from the right side of valve body.



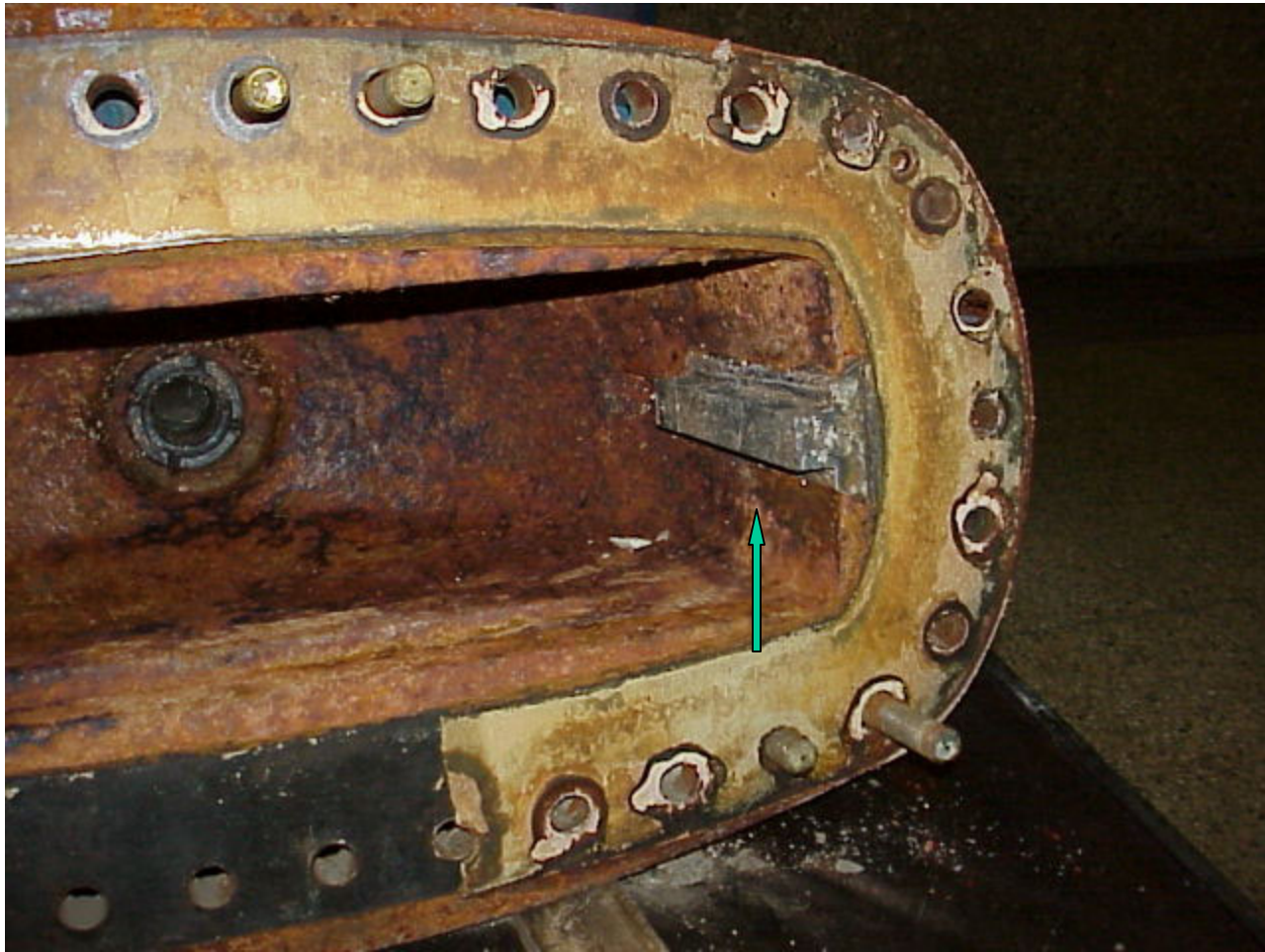
Rotork actuator and valve position gauge



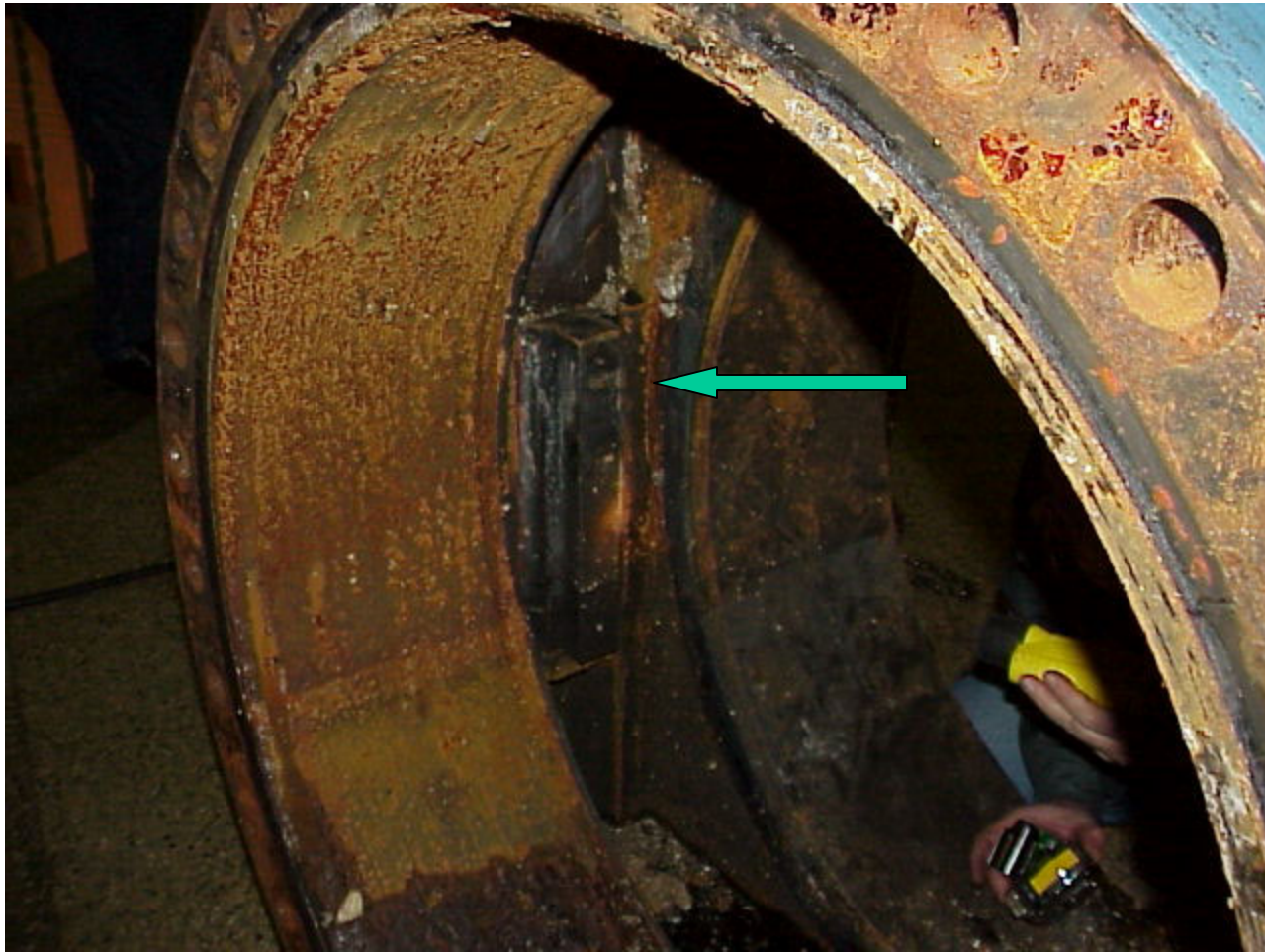
Valve plate and guide channel on side of valve.



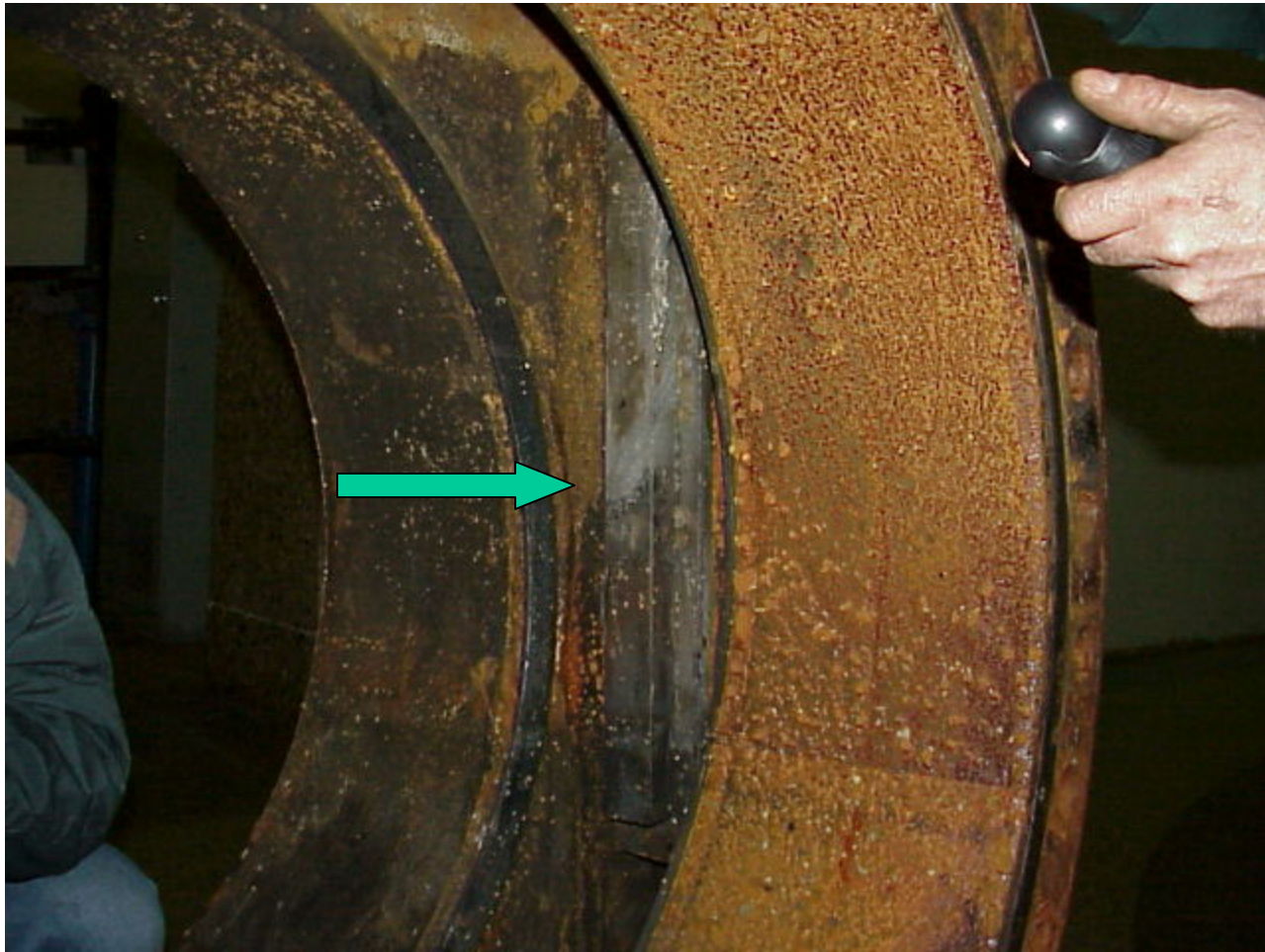
Interior view of valve bonnet showing location from where valve guide bar is missing.



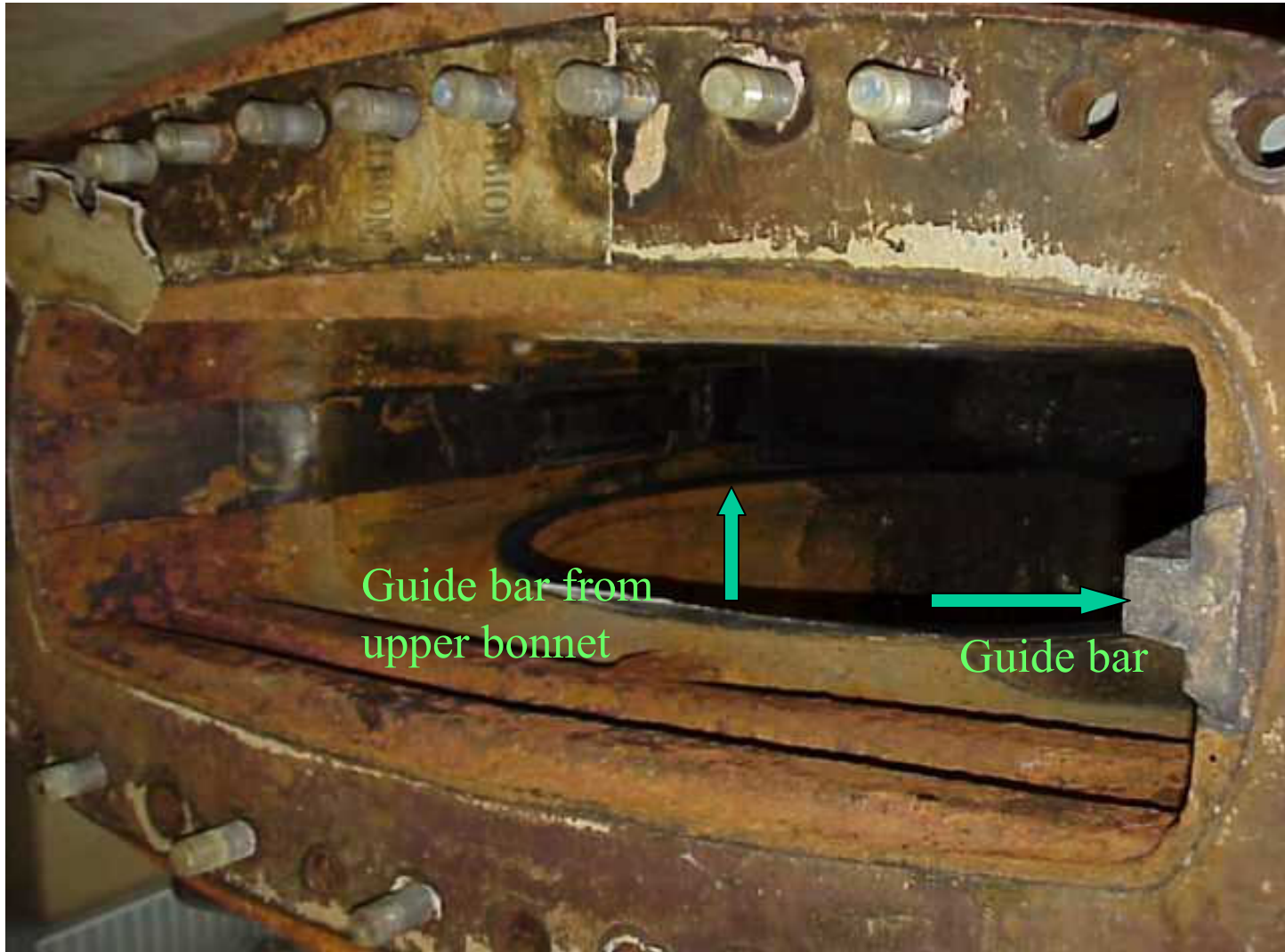
Opposite side of valve bonnet with valve guide bar in place.



Valve guide body showing upper valve guide bar from bonnet now located in lower portion of valve body



Valve guide bar in place on opposite side of valve body of suction gate valve.



Lower portion of suction gate valve.



Lower portion of suction valve - guide in place on right side and missing on left side as show by arrows



Close up view of valve bonnet showing channel where guide bar would be located.

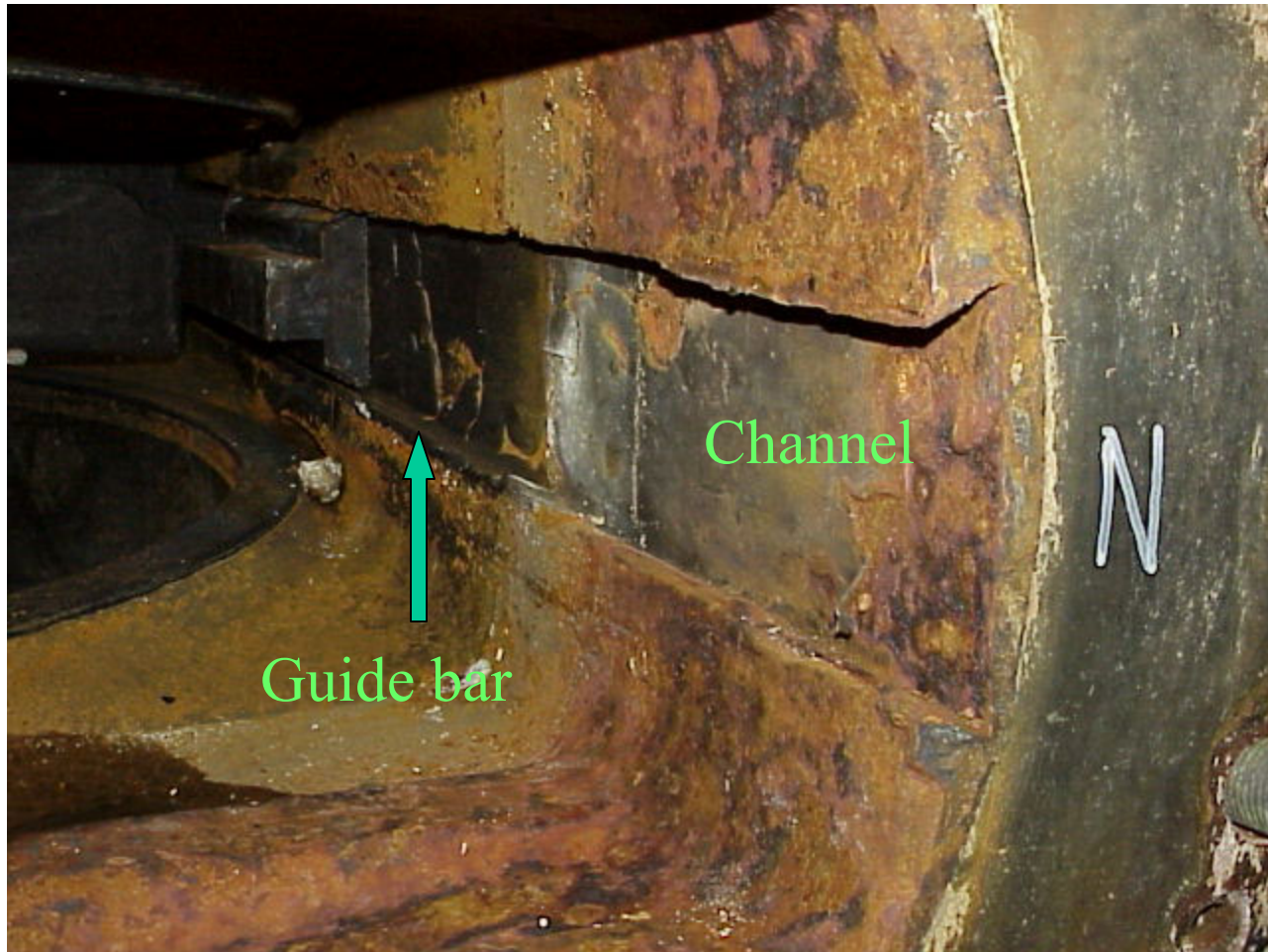


Photo of lower valve body - Guide bar for the bonnet is shown located in the lower portion of the valve body