

Influenza Surveillance Report 2019–2020

Week 1 (Dec. 29, 2019–Jan. 4, 2020)

Data extracted Jan.10, 2020 at 11:00 am

Next report date: Jan. 17, 2020

Provincial Update: Laboratory-confirmed influenza cases are reported as of Week 52 due to a delay in provincial data entry. Influenza activity in Manitoba increased during the holiday season overall (Week 52 and Week 1). In this period, both the number of all respiratory patients tested and the number of those tested positive for influenza increased compared to previous weeks. From Week 48, the influenza B detections continued to be higher than the influenza A detections. Close to 60% of reported influenza B cases this season are below the age of 15. Respiratory syncytial viruses are co-circulating at a high volume that is unusual for this time of year. The number of respiratory visits to the Emergency Department seems to have reached a peak in Week 52 that was the highest in the last three seasons. Activity level in other syndromic indicators continued to increase in the last few weeks and was within expected levels at this time of a year.

National Update: Influenza activity continued to increase during this three-week period. Influenza A(H3N2), A(H1N1) and B continue to co-circulate. Although influenza A remains the predominant circulating type, influenza B continues to circulate at higher levels than usual. In addition, while A(H3N2) remains the predominant subtype for the season to date, the proportion of A(H1N1) appears to be increasing.

International Update: As of Week 1, key indicators that track flu activity remain high, but indicators that track severity (hospitalizations and deaths) are not high at this point in the season. Overall, influenza B/Victoria viruses are the most common followed by influenza A(H1N1)pdm09. However, the predominant virus varies by region and age group.



Laboratory	Week 52
Laboratory-confirmed influenza cases:	
<ul style="list-style-type: none"> Influenza A: 28 Influenza B: 53 	
From Sept.	
<ul style="list-style-type: none"> Influenza A: 135 Influenza B: 272 	

Severity	This Week
Severe outcomes associated with influenza:	
<ul style="list-style-type: none"> Hospitalizations: 0 ICU* admissions: 0 Deaths: 0 	
From Sept.	
<ul style="list-style-type: none"> Hospitalizations: 38 ICU* admissions: 5 Deaths: 1 	

Outbreaks	This Week
Laboratory-confirmed influenza outbreaks:	
<ul style="list-style-type: none"> Influenza A: <5 Influenza B: 0 Influenza A & B: 0 	
From Sept.	
<ul style="list-style-type: none"> Influenza A: 7 Influenza B: 1 Influenza A & B: 0 	

Calls	This Week
Calls to Influenza Service at Health Links–Info Santé: 32 ↑	

Physician Visits	This Week
Visits to sentinel physicians due to ILI: 4.5%	

Vaccine	As of Dec.27
<ul style="list-style-type: none"> Percentage of Manitoba residents immunized with the seasonal influenza vaccine: 22% 	

Antiviral	This Week
Units of antiviral dispensed from pharmacies: 82 ↑	

ER Visits	This Week
Respiratory visits to Emergency Department (ED): 256/day	

Note. * ICU admissions were also included in hospitalizations. Numbers are subject to change. Missed events in the current report due to a delay of submission to MHSAL will be included in later reports when data become available.

Influenza Surveillance Report 2019–2020

Figure 1. Weekly Cases of Laboratory-Confirmed Influenza, Manitoba

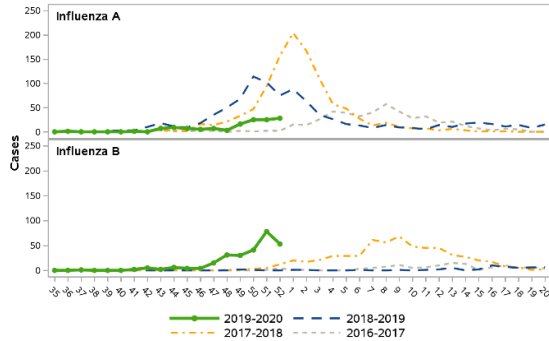


Figure 3. Average Daily Respiratory Visits to Emergency Department and % of Total Visits, Winnipeg Regional Health Authority, Manitoba

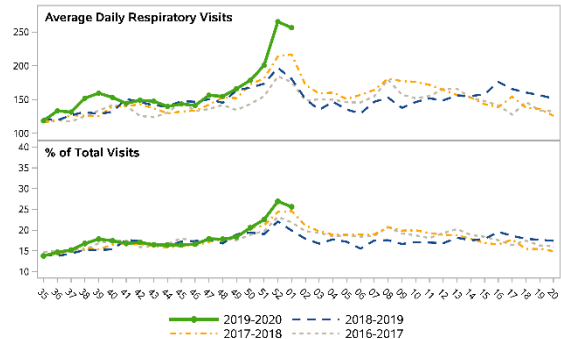


Figure 3. Weekly Influenza and ILI Outbreaks, Manitoba

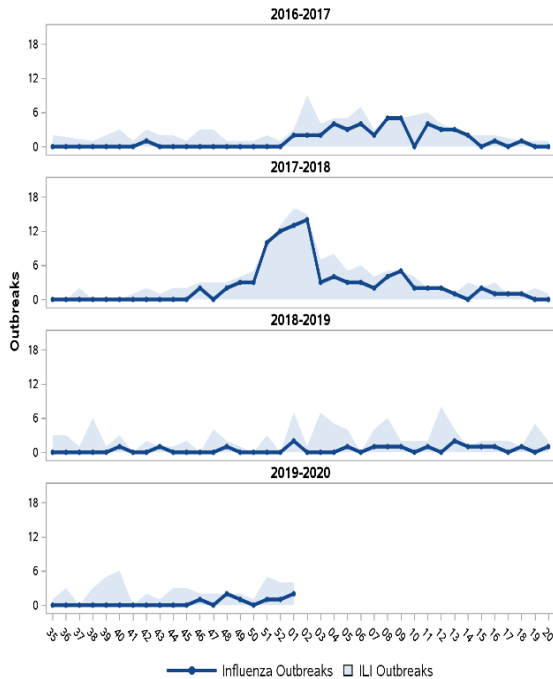


Table 1. Antiviral Resistance of Isolates by Influenza Type and Subtype since September 1, 2019

		Oseltamivir		Zanamivir	
		R*	S**	R*	S**
Canada	A(H3N2)	0	86	0	86
	A(H1N1)	0	45	0	45
	B	0	57	0	56
Manitoba	A(H3N2)	0	4	0	4
	A(H1N1)	0	3	0	3
	B	0	11	0	10

* Resistant **Sensitive

Table 2. Influenza Strain Characterization reported by National Microbiology Laboratory since September 1, 2019

Strain	Number of viruses	
	Canada	Manitoba
Influenza A (H3N2) A/Kansas/14/2017-like	28	1
Influenza A (H1N1) A/Brisbane/02/2018-like	62	3
Influenza B B/Colorado/06/2017-like	97	11

As per the World Health Organization (WHO), all seasonal quadrivalent influenza vaccines for 2019–2020 in the northern hemisphere contain those strains.